

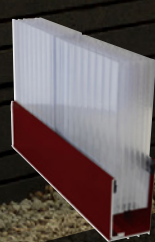
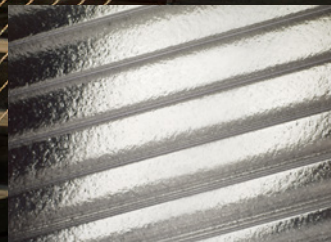
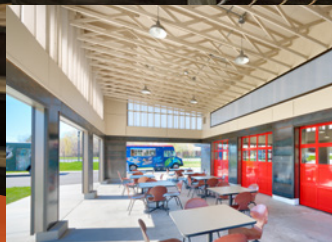


IlluminPC™

POLYCARBONATE MULTI-WALL SYSTEMS



CREATING ENVIRONMENTS WHERE PEOPLE CAN SHINE™



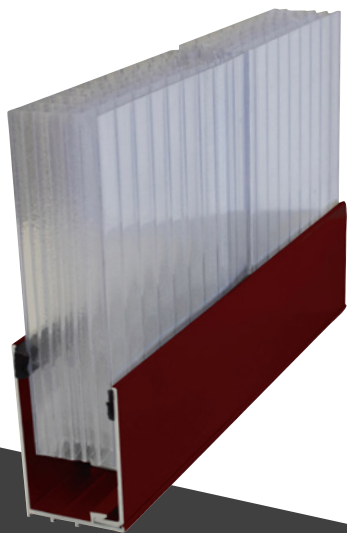
IlluminPC™

The Hub
South Jordan, UT
Curtis Miner Architecture
Image by Martin van Hemert Photography

AN EVOLUTION IN TRANSLUCENT DAYLIGHTING

Take another look at translucent daylighting with IlluminPC™ wall systems. Their polycarbonate multi-wall panels and aluminum framing provide a strong and secure system that delivers diffuse natural light and dependable performance. IlluminPC™ features tongue-and-groove panel construction, making it easy to install and allowing for a clean, modern appearance. With panel U-factors of .19 and a wide range of color choices that allow you to control light transmission, they're also incredibly versatile and customizable. From a small clerestory to expansive wall sections, IlluminPC™ is a versatile and economical daylighting tool.

Need something bold? IlluminPC™ offers the color options to make your design dreams a reality. From bright custom colors to dual-color panel options, we can create the eye-catching look you need. Contact Major with your daylighting design challenges and we'll work with you to find the optimal solution.



IlluminPC™ SYSTEM FEATURES

- 40mm (1.57 inch) panel thickness
- Panels come in standard 19-11/16 inch (500mm) widths, and can be up to 20 feet long
- Crystal (Clear), Opal (White), sheet colors available with Light Transmission values from 44% to 67% - custom colors also available
- Excellent impact and hail resistance
- Panel U-factor of .19 provides great thermal performance
- Tongue-and-groove joints between panels for a clean and modern appearance
- U.V. inhibitors coextruded into the sheets for long-term durability
- Numerous finish options and colors available
- Designed for ease of installation - saving time and money



Lightweight and easy to install...

888-759-2678 / www.majorskylights.com



The Hub
South Jordan, UT
Curtis Miner Architecture
Image by Martin van Hemert Photography

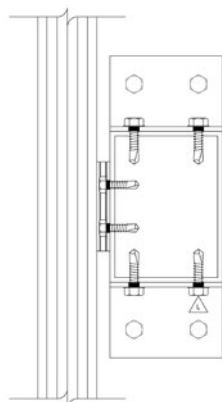
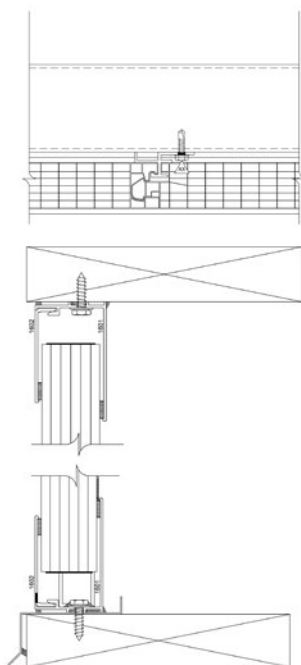


Music Street Residence & Studio
New Orleans, LA
Eley Guild Hardy Architects & Volume Zero
IlluminPC™ Wall Systems
Images © Richard Sexton

PERFORMANCE & TESTING

Our custom engineered IlluminPC™ wall systems are designed to meet or exceed all applicable building codes and structural requirements and have the following performance attributes:

- Flame Spread/Smoke Development - ASTM E-84 - Flame Spread: <25/UL 723, ANSI/NFPA #255 - Smoke Development: <450
- Burn Extent - ASTM D-635 - CCI - less than 1.0 inch
- Self-Ignition - ASTM D-1929 - Flash Ignition: 986°F (530°C)
- Impact Strength/Izod Impact Strength - ASTM D-256 - .937-18.3 ft lb/in/in (0.5-9.77 J/cm) of notch
- Tensile Strength - Yield/Ultimate - ASTM D-638 - 8,500-10,200 psi / 7,830-10,400 psi
- Tensile Modulus - ASTM D-638 - 232-348 ksi
- Flexural Yield Strength - ASTM D-790 - 10,900-16,000 psi
- Flexural Modulus - ASTM D-790 - 261-600 ksi
- Structural Load Test - ASTM E-330 - Combined Max Deflection: <1"
- Air Infiltration - ASTM E-283 - 0.02 cfm/ft² @ 6.24psf
- Static Water Penetration - ASTM E-331 - No Water Penetration @ 12psf
- Color Difference - ASTM D-1925 - ΔE = 10 after 10 years



	IlluminPC™ SHEET COLOR OPTIONS					
	(Additional color options available, including dual color panels. Contact Major for details)					
	Crystal (Clear)	Opal (White)	Crystal I.R.	Opal I.R.	Green	Bronze
LIGHT TRANSMISSION - %						
40mm	67%	44%	41%	26%	60%	45%
SOLAR HEAT GAIN COEFFICIENT						
40mm	0.68	0.45	0.35	0.30	0.57	0.50
U-FACTOR						
Panel Only / T. B. System	0.19 / 0.34					
CRF⁴						
40mm	64					

Major Industries, Inc. reserves the right to improve products without notice as the result of ongoing R&D and/or third-party compliance.

...IlluminPC™ wall systems = versatility and durability.

888-759-2678 / www.majorskylights.com



ABOUT MAJOR INDUSTRIES, INC.

Major Industries engineers and manufactures custom skylights and translucent wall systems that fit your needs - and your budget. With more than four decades of experience, we know that architects, designers and owners are looking for tough, dependable and cost-effective daylighting systems, and we've created a wide range of systems to fit every need — all backed by industry-best warranties and an excellent on-time delivery record.

Your decision to use Major Industries is a sign of trust we take seriously, and we're committed to working with you to create the optimal daylighting solution for your next project. Our sales team will work with you to find a daylighting solution that's right for your next project, and our in-house structural engineering capabilities help you conquer your toughest design challenges. From light-controlling translucent panel systems that eliminate glare and block damaging UV to glass skylights and unique mixed glazed systems, we provide reliable daylighting solutions that let natural light in while keeping the elements out.

For more information, visit us online
at www.majorskylights.com

MAIN COVER:
Music Street Residence & Studio-
New Orleans, LA
Eley Guild Hardy Architects & Volume Zero
IlluminPC™ Wall Systems
Image © Richard Sexton

COVER INSET:
The Hub
South Jordan, UT
Curtis Miner Architecture
Image by Martin van Hemert Photography



Major Industries provides
nationwide continuing
education to Architects
with its certified continuing
education programs.

Major Industries, Inc. reserves the right to improve products without
notice as the result of ongoing R&D and/or third-party compliance.

©2021



SKYLIGHTS, CANOPIES & TRANSLUCENT WALL SYSTEMS

MAJORSKYLIGHTS.COM

7120 STEWART AVE, WAUSAU, WI. 54401

SALES@MAJORSKYLIGHTS.COM / 888-759-2678 / 715-842-4616

