

CREATING ENVIRONMENTS WHERE PEOPLE CAN SHINE™

MAJOR
INDUSTRIES

INNOVATIVE DAYLIGHTING

SKYLIGHTS & TRANSLUCENT WALL SYSTEMS FROM MAJOR INDUSTRIES, INC.





ABOUT

MAJOR INDUSTRIES, INC.

Company Background

Major is committed to creating the highest quality, most reliable and most advanced daylighting systems available. Our goal is to provide you with an unsurpassed custom skylight or translucent wall system that fits your needs... and your budget.

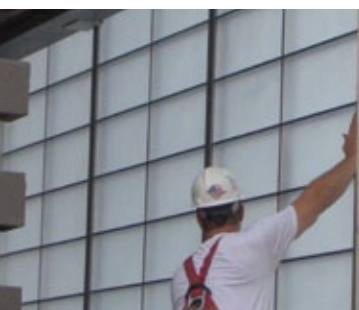
Founded in 1980 in Wausau, Wisconsin, Major Industries has long been recognized as a leader in the translucent daylighting industry. With more than 52,000 square feet of modern manufacturing space, along with state-of-the-art manufacturing systems, we can provide superior material handling and efficiency - resulting in improved lead times and precise manufacturing tolerances.

Innovative Efforts

Everyone at Major is focused on producing quality daylighting solutions, but we recognize that without satisfied customers, product means nothing. Our sales team will help you determine which daylighting solution is right for the space, and our in-house structural engineering capabilities help you conquer the toughest design challenges. From Quick Ship™ pre-engineered skylights for tight deadlines to SkyPrice™, our online quote system that provides fast, accurate quotes in a reduced amount of time, we're ready to make your daylighting visions a reality. Major is the only daylighting manufacturer to offer translucent panel daylighting systems plus glass and polycarbonate multi-wall systems. We offer a wide range of glazing options that ensure we have the right solution to your design challenge.

Our Commitment

Utilizing natural light is an integral part of sustainable design and green building practices, and Major is committed to developing the highest quality, most reliable and most advanced daylighting systems available. To find out more about how Major can assist you with your next daylighting project, please call one of our customer service representatives at 888-759-2678 or send us a message at info@majorskylights.com. For more detailed information, test results, an extensive project image gallery and more, visit us online at www.majorskylights.com.



Let Major Industries make your daylighting vision a reality.

888-759-2678 / www.majorskylights.com



LIGHTBASIC™

AVAILABLE IN WALL SYSTEM AND PRE-ENGINEERED SKYLIGHT CONFIGURATIONS



ACRYLIC-BASED
ACRYLIT GC® FACE
SHEET TECHNOLOGY

PROVIDES DIFFUSE
LIGHT THAT
ELIMINATES GLARE
AND HARMFUL UV



LightBasic™ Wall System

VALUE-ENGINEERED TRANSLUCENT PANEL SYSTEMS

LightBasic™ is the perfect balance of economy and performance, delivering outstanding sun control at an economical price.

LightBasic™ wall systems and pre-engineered skylights consist of a simplified framing system and panels constructed of an aluminum grid core and two fiberglass reinforced face sheets that allow light to pass through while eliminating glare and blocking harmful UV rays. It's a unique blend of performance and price that's aimed at budget-conscious buyers who demand an economical translucent daylighting system that will hold up under a variety of conditions. Though they're a good fit for a wide range of projects, for both new and retrofit construction, they're especially suited for projects where natural light is key but tight budgets rule.

- Designed to be cost-effective
- Available in wall system and pre-engineered skylight configurations
- Durable fiberglass-reinforced face sheets provide diffuse light plus economy and long life
- 2.75" thick panels with optional translucent insulation for enhanced thermal performance
- Built-in moisture management
- Available in two standard sheet colors—White and Crystal
- 5 year color change and 10 year fiberbloom warranties standard

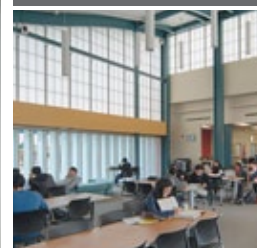
LightBasic™ is proof that economy and performance are compatible.

888-759-2678 / www.majorskylights.com

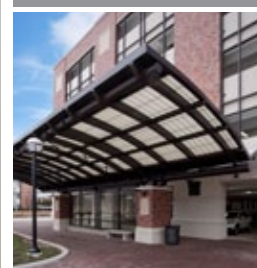


GUARDIAN 275®

AVAILABLE IN SKYLIGHT,
WALL AND CANOPY
CONFIGURATIONS



SPECIALTY SYSTEMS
AVAILABLE—WINDOW
WALL, BLAST,
HURRICANE PROTECTION
AND MORE

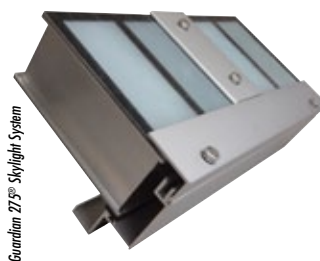


TRANSLUCENT SYSTEMS WITH UNMATCHED VERSATILITY

Guardian 275® translucent panel daylighting systems are a unique combination of high-performance materials and offer a versatile and energy-saving option for wall systems, skylights and canopies.

Their sandwich panel construction consists of an aluminum grid core and two Ultimate Series™ fiberglass reinforced polymer (FRP) face sheets that allow light to pass through while eliminating glare and blocking harmful UV rays. Guardian 275® can also be configured in a variety of configurations — from blast and hurricane protection to curved and removable systems to lightweight canopies — and offers a wide range of color and insulation options. Guardian 275® panels are a great fit for both new and retrofit construction.

- Built-in moisture management with internal gutters and weep holes in both the framing and the panels
- Ultimate Series™ face sheet technology that features an advanced composite resin system and UV blocking technology for superior color retention — plus an erosion veil for durability in extreme environments (numerous sheet colors available)
- EPDM gasketing and high-performance sealants help eliminate leaks
- Systems available in 4", 2.75", and 1" thick panels with insulation options
- Skylights and wall systems are designed with a maximum allowable deflection of L/120 — creating a stronger and more watertight system
- Standard fastener covers create a clean and fastener-free look
- Translucent Adapter Panels (TAP) that allow for retrofit into existing glass curtainwall framing
- Window-wall systems available that incorporate operable windows for ventilation and outside views
- 25 year fiberbloom and up to 20 year color change warranties available



Guardian 275® is our flagship product as well as the industry pacesetter.

888-759-2678 / www.majorskylights.com



PULTRUDED FIBERGLASS
SUPPORT MEMBERS



GREAT THERMAL
PERFORMANCE -
IMPROVED U-FACTORS
AND CRF

UNIQUE SNAP-TO-LOCK
INSTALLATION THAT
ELIMINATES UNSIGHTLY
FASTENERS

CLIMA-TITE™

MAXIMUM THERMAL PERFORMANCE

Clima-Tite™ takes the unmatched dependability of our Guardian 275® aluminum-based translucent panel systems and transforms them to a new level of thermal performance as well as condensation and corrosion resistance.

Clima-Tite™ features the same Ultimate Series™ face sheet technology and built-in water management as Guardian 275® systems, but with the enhanced thermal performance of pultruded fiberglass support members. Pultruded fiberglass has numerous advantages over aluminum, including dimensional stability, increased protection from temperature differences, and better corrosion and condensation resistance. Clima-Tite™ also has a unique snap-to-lock installation feature that saves labor costs and provides a clean, sleek look without unsightly fasteners. From standard wall systems to window-wall systems that incorporate operable composite windows, Clima-Tite™ offers outstanding thermal performance for your next project.

- Excellent corrosion resistance—great in environments that can damage standard aluminum framing
- High impact and UV resistance for durable and long-lasting performance
- Framing has low thermal conductivity — eliminating the need for thermal breaks
- Ultimate Series™ face sheet technology that features an advanced composite resin system and UV blocking technology for superior color retention — plus an erosion veil for durability in extreme environments (numerous sheet colors available)
- Systems feature 2.75" thick panels with insulation options
- No special handling or transportation requirements - and is paintable just like standard aluminum framing
- Window-wall systems available with single, double and triple-glazed glass options, low-E coatings, and more

Clima-Tite™ Wall System



Clima-Tite™ Window Wall System

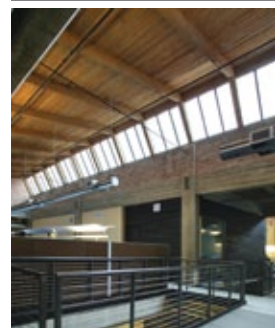


Improving thermal performance has never been easier.

888-759-2678 / www.majorskylights.com



GLAZING OPTIONS
INCLUDE GLASS,
POLYCARBONATE
MULTI-WALL OR ACRYLIC



CUSTOM AND PRE-
ENGINEERED SIZES
AVAILABLE - WITH
NUMEROUS OPTIONS

MIXED GLAZED
SYSTEMS AVAILABLE
FOR A UNIQUE LOOK

AUBURN®

DURABILITY & DEPENDABILITY

Auburn® custom and pre-assembled glass, polycarbonate multi-wall and acrylic skylights give owners great value at a low price. Auburn® skylights are designed specifically for small and medium projects and are engineered to save time, money, and weight.

Auburn® skylights feature high-performance sealants and gasketing and built-in water management for long-term durability. They are also available in mixed glazed configurations that can incorporate Guardian 275® translucent panels or polycarbonate multi-wall to create a unique, eye-catching and functional design.

- Engineered systems feature integral screw races, providing superior anchorage and uniform load transfer
- Integral guttering on all structural members allows for positive water and condensation control
- Structural framing members are optimized for lower cost and reduced weight
- Universal "slope adapters" are available to fit all standard rafters, creating precise slope control regardless of shape
- Engineered systems come standard with tubular rafters, which often eliminate the need for support tubes and provide a finished look
- Pre-assembled single slope units are available in smaller sizes
- Instant pricing from our SkyPrice™ system
- Unmatched versatility — Major offers mixed glazing systems that combine the visual impact of glass with the thermal performance and light control of translucent panels



Auburn® Single Slope Skylights

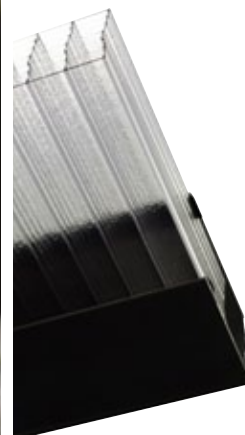
Expect innovation in the way we build our products and the way we service your needs.

888-759-2678 / www.majorskylights.com



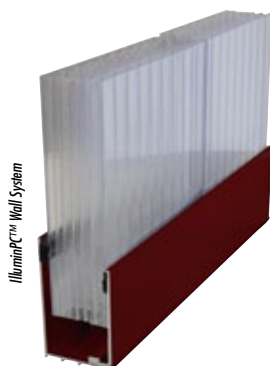
ILLUMINPC™

LIGHTWEIGHT AND
DURABLE - WITH NO
VISIBLE FASTENERS



EASY-TO-INSTALL AND
MAINTAIN

EXCELLENT THERMAL
PERFORMANCE AND
LIGHT TRANSMISSION
VALUES



AN EVOLUTION IN TRANSLUCENT DAYLIGHTING

Take a new look at daylighting with IlluminPC™ wall systems. Their polycarbonate multi-wall panels and aluminum framing provide a strong and secure system that delivers diffuse natural light and dependable performance.

IlluminPC™ features tongue-and-groove panel construction, making it easy to install and allowing for a clean, modern appearance. With panel U-factors of .19 and a wide range of color choices that allow you to control light transmission, they're also incredibly customizable. From a small clerestory to expansive wall sections, IlluminPC™ is a versatile and economical daylighting tool.

- 40mm (1.57 inch) panel thickness
- Panels come in standard 19-11/16 inch (500mm) widths, and can be up to 20 feet long
- Crystal (Clear), Opal (White), Green and Bronze sheet colors available with Light Transmission values from 44% to 67% - custom colors also available
- Excellent impact and hail resistance
- Panel U-factor of .19 provides great thermal performance
- Tongue-and-groove joints between panels for a clean and modern appearance
- U.V. inhibitors coextruded into the sheets for long-term durability
- Numerous finish options and colors available
- Designed for ease of installation - saving time and money

Our full range of glazing options allows for more design freedom.

BEAUTY

AND BENEFITS OF DAYLIGHTING

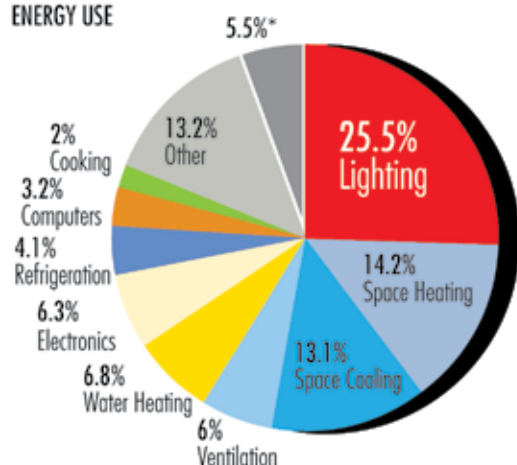
Natural light is a key ingredient in building design, and for good reason. Studies show that natural light positively impacts a variety of spaces, including schools, commercial spaces, manufacturing settings and even retail environments. When daylighting is implemented, retail sales have been shown to increase, and worker productivity has been shown to improve significantly in manufacturing settings. Educators have long known that access to natural light can improve student test scores, long-term retention, and concentration — plus it gives everyone a more comfortable place to teach and learn.

Utilizing natural light reduces the need for power-hungry artificial light sources, which can make up more than 25% of a commercial building's overall energy use. This is especially important during peak energy use hours when costs are highest.

Though natural light has its benefits, allowing uncontrolled sunlight into a space can also cause issues. Solar heat gain can have a significant impact on HVAC systems, and in today's digital age it's also important to consider smartphone, computer and tablet use when choosing a daylighting system as excessive glare and hot-spots can cause eye fatigue and make occupants uncomfortable. In these spaces, a translucent panel system might be a better solution as they eliminate glare while offering a variety of insulation options that provide low U-factors and significantly reduced solar heat gain.

Whether your next project calls for a highly insulated translucent system or a glass skylight with eye-catching views, the team at Major Industries can help you create an optimal daylighting solution.

COMMERCIAL BUILDING
ENERGY USE



*5.5% misc.—used to reconcile two divergent data sources
Data courtesy of the Department of Energy's
Office of Energy Efficiency and Renewable Energy.

Daylighting reduces the consumption of energy while improving human performance.

888-759-2678 / www.majorskylights.com



MIXED GLAZED
SYSTEMS—INCLUDING
OPERABLE WINDOWS



BLAST AND HURRICANE
PROTECTION SYSTEMS

TRANSLUCENT ADAPTER
PANEL SYSTEM FOR
EASY RETROFIT INTO
EXISTING FRAMING

SPECIALTY SYSTEMS

VERSATILITY FOR ANY PROJECT

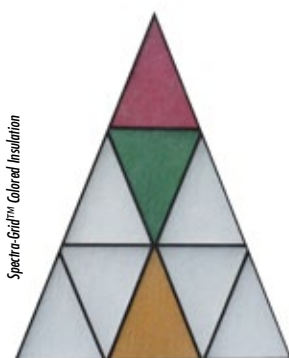
Our wide range of system options allow designers to make their design conceptions a reality. From mixed glazed translucent panel and glass skylights and wall systems to tough and dependable blast rated systems, we can solve your daylighting challenges.

Specialty systems and options include:

- Blast protection systems that meet or exceed DoD, GSA, ASTM and AAMA performance requirements
- Hurricane protection systems that cover 95% of the hurricane zones in North America
- Pressure relief panels with third-party certified fasteners that relieve sudden pressure surges
- Removable skylights for easy access to machinery and equipment
- Translucent Adapter Panels (TAP) for easy retrofit into existing 1" curtainwall framing
- Window adapters that allow for seamless integration of Guardian 275® panels with 1" glass or 25mm polycarbonate, as well as adapters that allow for integration of 2" to 2.75" windows and louvers
- International fire ratings
- Custom grid patterns and overlays available for a channel-glass look, to tie into other design elements, or to make an eye-catching statement
- Spectra-Grid™ colored insulation options for a unique and colorful look that can mimic stained glass
- Clima-Tite™ and Guardian 275® wall systems can incorporate operable windows for ventilation control
- TransCURVE™ curved translucent panel wall systems and skylights



Custom Grid Pattern Overlay



Spectra-Grid™ Colored Insulation

Versatility and adaptability turn our capabilities into your solutions.

888-759-2678 / www.majorskylights.com

WHY CHOOSE MAJOR INDUSTRIES?

Unmatched Service and Support:

From feasibility and design consultations to technical support to final installation, Major will be there to assist with your project needs.

Decades of Experience:

Since our founding in 1980, we've successfully completed more than 20,000 daylighting projects... and our experience shows!

Innovative Technology:

We use the latest in materials and fabrication technology to create daylighting solutions that are lightweight, energy efficient, cost-effective and beautiful.

Extensive Product Line:

We can design, build and install skylights and translucent wall systems that meet your needs and budget. Our comprehensive product line includes LightBasic™, Guardian 275® and Clima-Tite™ translucent panel wall and skylight systems as well as Auburn® Engineered skylights.

Field-Tested Reliability:

From New York to Hawaii, you'll find our daylighting solutions throughout the U.S., and in countries around the world.



Major Industries provides nationwide continuing education to Architects with its certified training sessions.



7120 Stewart Avenue, Wausau, WI 54401

Toll free: 888-759-2678

Voice: 715-842-4616

Fax: 715-848-3336

www.majorskylights.com

Email: info@majorskylights.com

Major Industries, Inc. reserves the right to improve products without notice as the result of ongoing R&D and/or third-party compliance. Images shown for illustrative purposes only. ©2016 - Major Industries, Inc.