



BriteWay™

Canopies + Walkways


Kingspan.

 **CPI** Daylighting
Building Envelope Solutions

The **KLA** Advantage

Kingspan Light + Air | CPI Daylighting is an award-winning innovator of translucent daylighting solutions for high-performance building envelopes, headquartered just north of Chicago.

Since the 1980s, we have been a pioneer and leader of the daylighting industry. We continually innovate so clients never have to choose between efficiency, style, and safety, and our pledge to sustainability is instilled at every level of the company and at every step in the manufacturing process.

Our global team of highly-skilled and experienced professionals is a community of doers, ensuring we are the partner of choice for the ever-changing world of modern construction. Together, we leverage our knowledge and expertise to serve as the leading daylighting consultants for the architectural community and building industry.

Never Compromise. Always Innovate. Kingspan Light + Air.



BriteWay™ Translucent Canopies

Envision A Brighter Path.

Kingspan Light + Air | CPI Daylighting is a single-source provider of BriteWay™ translucent canopies, offering flexible design options that include both pre-engineered and customized systems from the ground up.

We believe that good design can have a profoundly positive effect on the built environment and improve the way that we work, learn, play and live. While metal-roof canopies leave passers-by feeling confined and adjacent areas cast in shadow, the BriteWay™ canopy utilizes a translucent glazing cover that allows light to pass through to create a comfortable and well-lit walkway.

Our mission is to set higher standards for the quality and versatility of daylighting technology as we strive to advance daylighting design.

Collaboration is Key

As expert problem-solvers, we team up with architects, contractors and building owners to develop simple solutions to complex problems. We leverage our 35-plus years of experience to assist you at each stage of the process – from preliminary design to the final installation of the system – and ensure that all of your project needs are met.

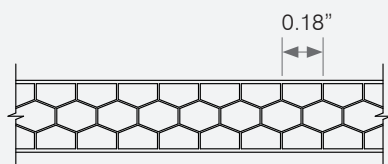
Architectural Support

Our architectural support team is dedicated to assisting you with preliminary design and answering any technical questions that you may have about our systems. Our architectural design consultants will provide you with everything from structural engineering and preliminary load calculations to custom details and clarification of building code requirements. Our goal is to help you design the optimal canopy system that will achieve a superior level of performance and also fit within your budget.

Don't Compromise

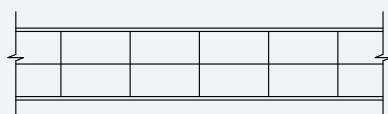
You shouldn't have to compromise your design due to product limitations or the rigidity of some manufacturers. Our goal is to enable architects to achieve the highest levels of building performance without sacrificing the aesthetic quality of their design. This is why we have worked tirelessly to develop the most versatile daylighting systems on the market.

Our Pentaglas® translucent glazing is precision engineered with Nano-Cell® technology. This specialized panel extrusion results in the cells measuring smaller than 0.18 inches, providing the panel with superior durability and prolonged resistance to impact. The unique cell structure significantly improves the quality and balanced distribution of glare-free natural light. Pentaglas glazing panels are co-extruded with a specialized UV inhibitor on both sides of the panel.

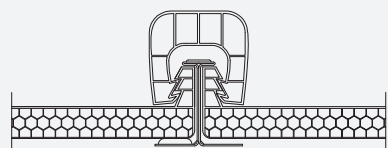


Nano-Cell Extrusion

— VS. —



Wide-Cell Extrusion



Double-Tooth Connection

The double-tooth edge on the upstands of the glazing panels enables the system to withstand extremely high loads without concern for the panels disengaging. As the panels deflect, their grip on the u-shaped panel connector actually strengthens, ensuring long-term performance under loading conditions.

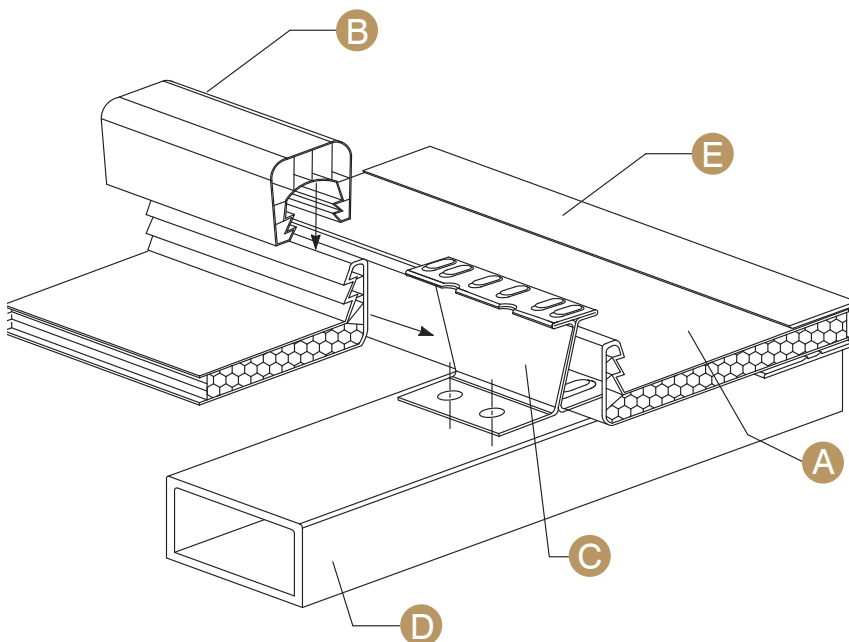
Glare-Free Matte Finish

Our Pentaglas® translucent glazing panels are extruded with a permanent matte finish on the underside of the panel, which increases light diffusion, virtually eliminates glare, and maximizes visual comfort.

Our Innovative Technology

Standing seam systems designed to provide maximum durability and ensure the highest quality performance

- A** Pentaglas® glazing panel
- B** Double-tooth panel connector
- C** Stainless steel panel clip
- D** Aluminum purlin substructure
- E** Aluminum framing system



Class 'A' Fire Protection

Our Pentaglas® glazing panels are certified for Class A (Type I) performance per ASTM E-84. We also offer a system to meet Class A roof construction requirements per ASTM E-108 / UL 790.

Stainless Steel Panel Clip

Our patented stainless steel panel clip is designed for heavy-duty performance, enabling the system to withstand high loading conditions and also maximizing the span between purlin supports.

Durable systems that stand up to tough conditions



Hurricane (HVHZ) Resistance

We offer systems that have been independently tested and certified per HVHZ code requirements and have Florida Product Approval. These systems are extremely durable and are engineered to meet large missile impact resistance, cyclic static air pressure and uniform air pressure requirements per ASTM E1886/E1996 as well as ASTM E330/E331, FBC TAS 201, TAS 202 and TAS 203 for hurricane endurance.

UV Protection/Color Stability

All of our glazing panels are co-extruded with a specialized UV inhibitor on both sides of the panel. This UV inhibitor is the most advanced on the market and provides the glazing with superior color stability. An additional HP coating can be applied for special applications.



Single Source Solutions

Kingspan Light + Air | CPI Daylighting offers you peace of mind by delivering single source solutions that include preliminary design, engineering, manufacturing, fabrication, and delivery of the system. Having one source helps simplify logistics and ensures consistent quality throughout the entire process.

To make certain that the job is done right, we require that all installers attend a mandatory training session to get certified by Kingspan Light + Air | CPI Daylighting prior to installing any of our daylighting systems.

Structure

- Our rust-free aluminum structure offers excellent durability and system longevity
- A variety of standard and custom finish options are available, including both paint and anodized finishes
- The aluminum structure is prefabricated using CNC manufacturing technology to provide superior quality control and reduce on-site installation time as well as field labor costs.



Longevity

Our systems have undergone actual 10-year weather testing in the harsh Florida sun to ensure both color stability and durability to impact over time. All of our glazing panels come with a standard 10-year warranty.

OSHA - Safety Compliance

All of our systems are OSHA and California OSHA compliant. They have been independently tested and certified as meeting or exceeding the OSHA required standards for point loading and fall-through protection.

Custom Canopies

Customized solutions that bring your vision to life.

Kingspan Light + Air | CPI Daylighting can provide everything from a simple glazing skin system to the design and fabrication of a full structural system, depending on the canopy's configuration and design loads. Your custom canopy might be a simple entrance overhang or perhaps a monumental structure with complex connections. We have experience with every scope of project.

Our Architectural Support team can partner with you and your team to help design the structure and determine the optimal solution for achieving your design goals and maintaining code compliance.



► CTA Cermak - McCormick Place

Chicago, IL id 37707
Ross Barney Architects

The main goal of the station design was to construct an eye-catching element that served as a visible landmark for this high-traffic transit stop. The canopy enclosure had two requirements: protect against wind and rain, and the platform had to remain clear of structural supports. The project required a durable, low maintenance system that also maximized the amount of natural light on the platform. Our custom translucent BriteWay™ canopy was selected to do just that, while also facilitating quick-and-easy installation and enabling the project to stay within budget.

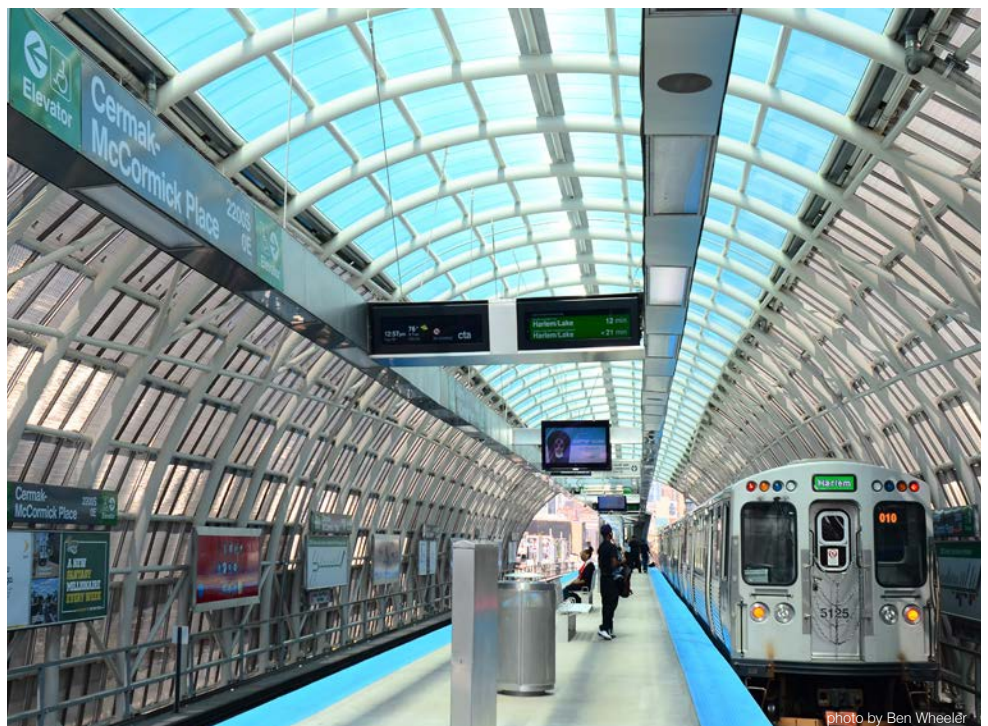


Photo by Ben Wheeler



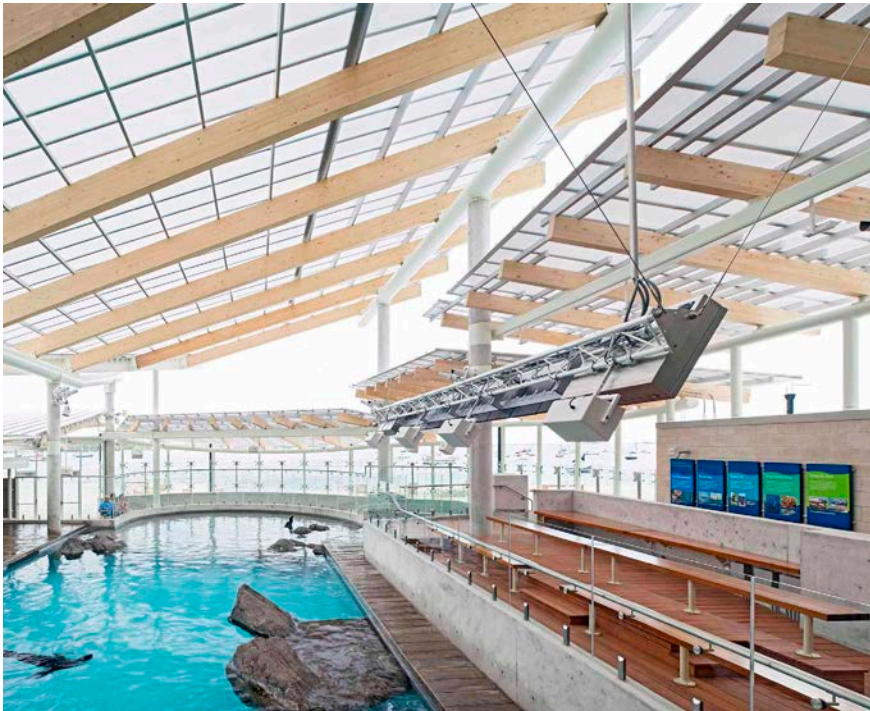
▲ University of N. Florida Student Center id 24863
Jacksonville, FL
Rink Design



Vibrant colors can help bring your canopy to life

The goal of the Monrovia Station Square development was to provide the community with a unique space that people could connect to and that would generate activity within the neighborhood. The bandshell canopy has become an iconic element in the park. The colorful glazing inserts give the canopy a more vibrant and playful appearance.

◀ Monrovia Station Square id 40160
Monrovia, CA
IBI Group



► **Norwalk Hospital** | Norwalk, CT
Freeman White id 32016

Collaboration and ingenuity played a crucial role in the successful design of the drive-up canopy at Norwalk Hospital (*pictured right*). Given the hospital's proximity to the ocean, the architect specified that the self-supported structure be made fully out of aluminum to prevent any rust and eliminate the need for periodic painting. Achieving this goal required some complex engineering to ensure that we could meet the large cantilever spans that the design required. We worked extensively with the architect and engineer to design the intricate structure and then fabricated the entire customized canopy system from the ground up.

▲ **New England Aquarium** id 24210 Boston, MA
McManus Architects

▼ **Museum of Flight Bridge** id 25284 Seattle, WA
SRG Partnership



photo by Lara Swimmer Photography



Imagination Meets Innovation



University of Pittsburgh Medical Center id 24359
Pittsburgh, PA
Burt Hill Kosar Rittlemann Architects

Single Source Solutions From The Ground Up



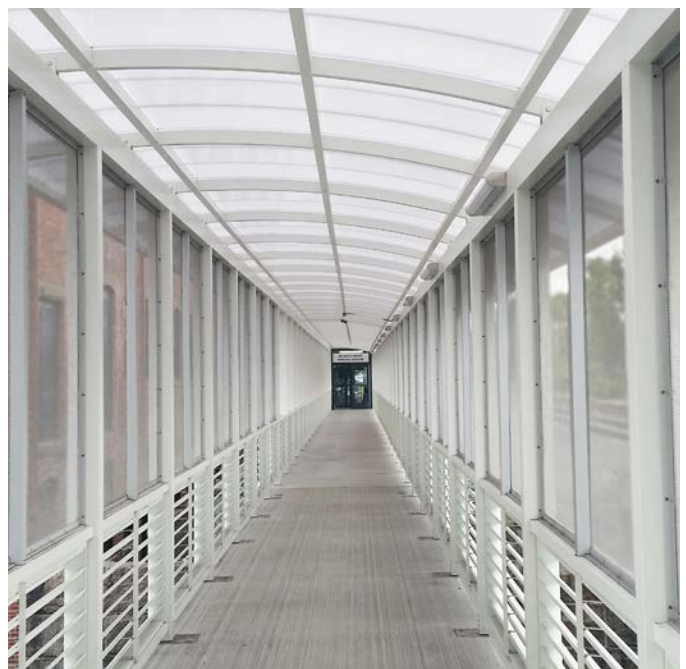


▲ **Tanger Outlet Mall** | Oxon Hill, MD
Adams + Associates Architecture id 36369

The open air outlet mall outside of Washington D.C. included more than 63,000 sq.-ft. of glazing for a series of overhead BriteWay™ ridge canopies that were designed to shelter shoppers. The goal was to allow for steady year-round retail traffic.

► **Beverly Depot Transit Station** | Beverly, MA
AECOM id 34362

The project required a high level of coordination and thoughtful scheduling, and Kingspan Light + Air | CPI Daylighting was able to provide a single-source solution to simplify the process. The custom BriteWay™ canopy features aluminum louver infill panels and custom stainless-steel wire mesh protective screening.



► **Mission Creek Maintenance** | San Francisco, CA
MK Think id 24532

Blue Pentaglas® glazing was used to clad one side of the Mission Creek Maintenance Facility and transition to a curved canopy above the entrance. The custom BriteWay™ canopy was designed to resemble a wave, creating a unique look that references the site's nautical context and pays homage to the historic wooden ships that used to sail Mission Bay.



1 BWI Airport / Baltimore, MD / URS Corporation / id 9682

2 Mississippi Memorial Stadium / Jackson, MS / CDFL Architects / id 15251



3 Osborne Rapid Transit Station / Winnipeg, MB / ft3 / id 30661

4 Barack Obama Learning Academy / Hazel Crest, IL / JMA Architects / id 37229

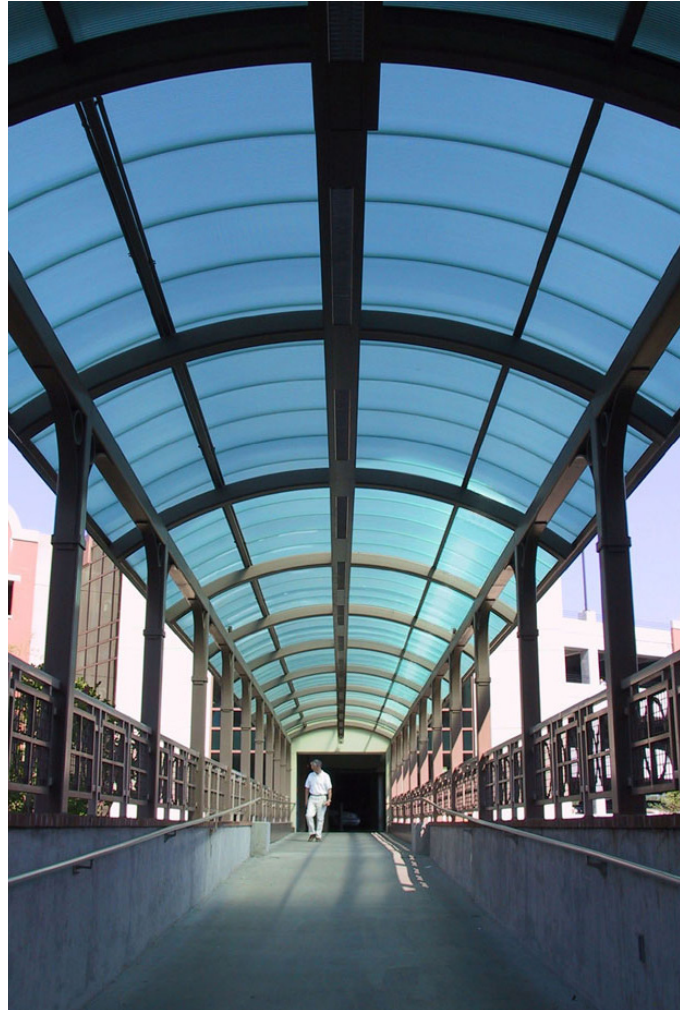
Clearspan Canopies

Pre-engineered canopies + walkways

Our BriteWay™ clearspan canopy is a standardized system that has been pre-engineered based on specific design criteria to ensure lasting performance. The innovative clearspan design eliminates the need for cross-bracing, which opens up the space below the canopy structure, creating a more comfortable and pleasant environment for pedestrians. These canopies not only provide shelter, but also allow diffuse natural light to pass through, resulting in a more vibrant walkway.

Benefits include...

- Design flexibility – a wide range of standard and custom finish colors, a broad selection of glazing colors, and a maximum canopy width of up to 20 ft.
- The rust-free aluminum structure offers excellent durability and system longevity
- KLA is able to provide a single-source solution, supplying everything from the ground up
- Components are shipped fully fabricated and ready to be assembled to ensure superior quality control and simplify the installation process
- No on-site cutting, welding or painting is necessary, which reduces labor time and installation costs
- Optional gutters and downspouts can be provided by Kingspan Light + Air | CPI Daylighting
- Optional Kynar® finish is available with up to a 20-year warranty
- An economical solution that fits your budget

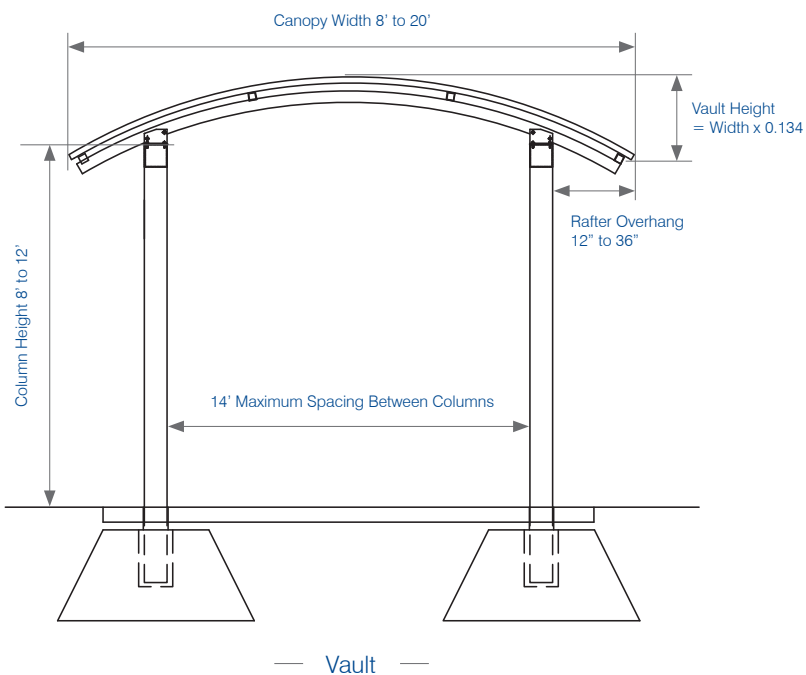


Pre-engineered
to fit your budget

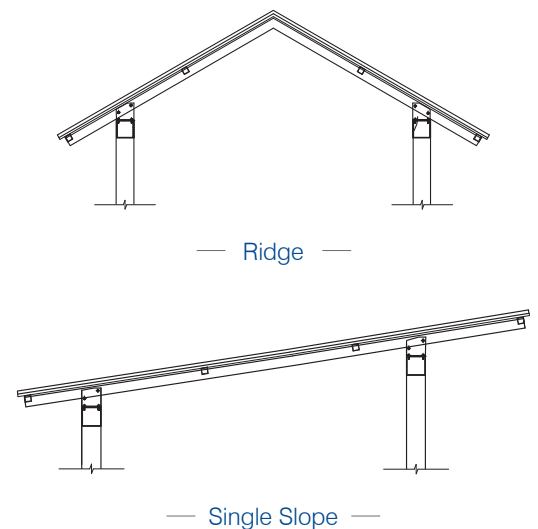
Edward Hynes Elementary School id 31175
New Orleans, LA
Hegedus Architects

photo by LAGNIAPPE PHOTOGRAPHY LLC

Clearspan Canopy Design Standards



Additional Configurations

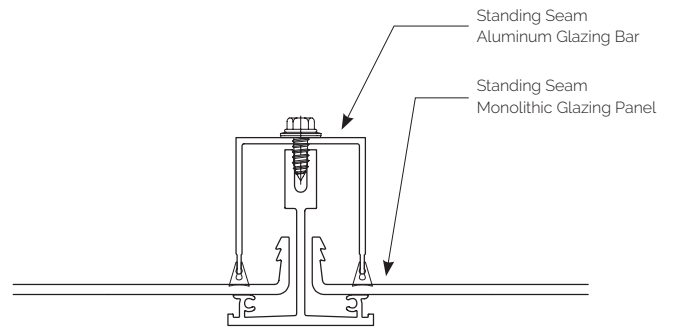


U-Lite

Monolithic Standing Seam Panel System For
Low Slope Canopy Applications

Designed for, but not limited to, canopies that have less than a 2:12 pitch, our U-Lite system utilizes a 4 mm thick monolithic standing seam glazing panel.

- Glazing panels are extremely durable and are resistant to high-impact
- Aluminum glazing bars enable larger spans - decreasing the amount of substructure needed and increasing savings on material and labor
- Lightweight system for fast, easy installation
- In-house CNC fabrication for superior quality control
- Florida Product Approval for high velocity hurricane zones



An Economical Alternative to Glass Canopies

The elegant, slim profile of the glazing panels gives the U-Lite system the sleek look offered by glass without the high price tag. Glass systems are often cost prohibitive and require a more complicated installation. The simplicity of the U-Lite system and the lightweight nature of the materials enable the system to be installed quickly and with ease. The glazing material is inherently flexible and will not shatter upon high impact. The extreme durability of the U-Lite glazing panel helps to ensure the longevity of the system, curbing future costs.



An economical alternative to glass canopies



Sheet Metal Workers Union 36 id 30185
Fulton, MO
Treanor Architects



Flexible design options to enhance your canopy design

- The system is designed without a perimeter frame, resulting in an exposed “floating” edge that gives the system a sleek, contemporary look; optional enclosed edge is available
- Glazing panels come in a wide range of colors and both translucent and transparent glazing options are available – many of which provide a similar appearance to glass
- Can accommodate both standard or flared end designs

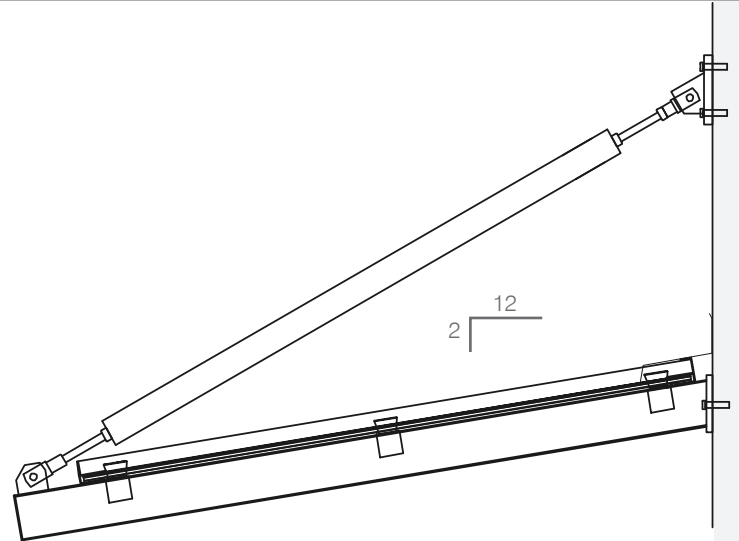
◀ Metropolitan MSC id 40892
Houston, TX
PGAL

LiteBrow

Suspended Translucent Canopy System

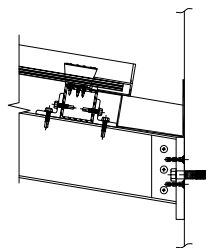
LiteBrow is an extremely durable pre-engineered attached canopy system designed to withstand a combined load of up to +/- 120 psf. While these modular canopy units come in three standard sizes, custom engineered systems are also available.

- Shipped fully assembled for fast, easy installation
- All connection components and hardware are provided by Kingspan Light + Air | CPI Daylighting
- Can utilize either Pentaglas® or our monolithic U-Lite glazing panels



◀ Improved work environment promotes comfort

A 144' long curving suspended translucent canopy was engineered and installed over the cafeteria windows at a corporate facility. The canopy provides durable translucent shelter while allowing diffused natural light to filter into the cafeteria, providing a bright comfortable environment for the company's employees.

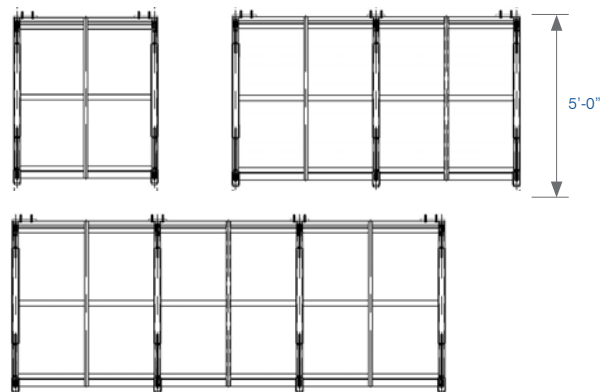


Reverse incline with gutter at wall

Typical units are designed to slope away from the building, but designers have the option to request a reverse incline which includes a gutter at the face of the wall.

Standard LiteBrow canopy sizes

These canopies are available in 5'x4', 5'x8' and 5'x12' units



Making the perfect entrance
is easier than you think.

◀ **USCB** | Bluffton, SC

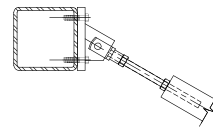
A modern alternative to awnings and sun shades

We have designed a system that not only protects the front entrance of your building, but it also allows glare-free natural light into the adjacent space while limiting heat gain - creating a more pleasant and comfortable environment for occupants.

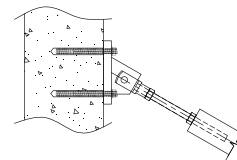
More traditional systems, such as awnings and sun shades, are designed to block out the light, leaving these spaces cast in shadow.

◀ **Wall Connections**

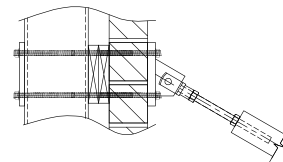
Tie rods must attach back to a structural component of the wall. Connections and fasteners will vary depending on building material.



Connection to steel



Connection to concrete



Connection to masonry wall



**Kingspan Light + Air
CPI Daylighting**

28662 N. Ballard Drive
Lake Forest, IL 60045 U.S.A.

800.759.6985 847.816.1060

Fax 847.816.0425



To learn more, visit:

cpidaylighting.com

Olympia Regional Learning Academy id 37100
Olympia, WA
TCF Architecture

© 2016 Kingspan Light + Air | CPI Daylighting All rights reserved.

Kingspan Light + Air | CPI Daylighting, Inc. reserves the right to change, discontinue or modify our products, specifications and designs at any time without notice and without incurring obligations. Printed in the U.S.A.