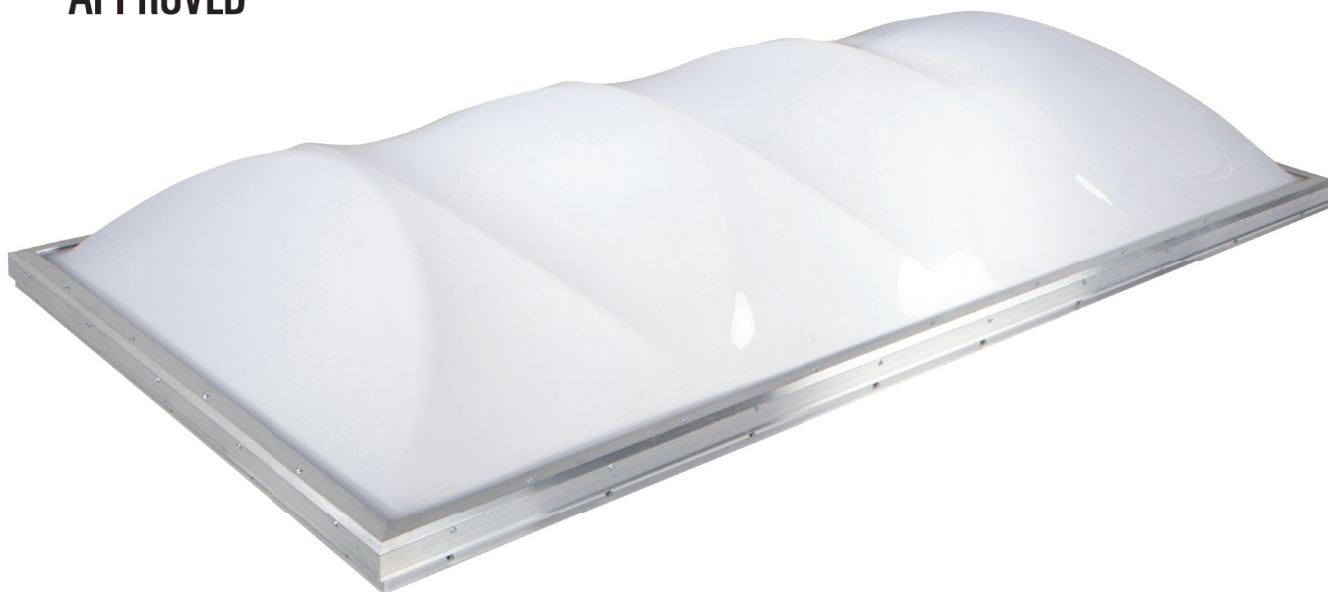


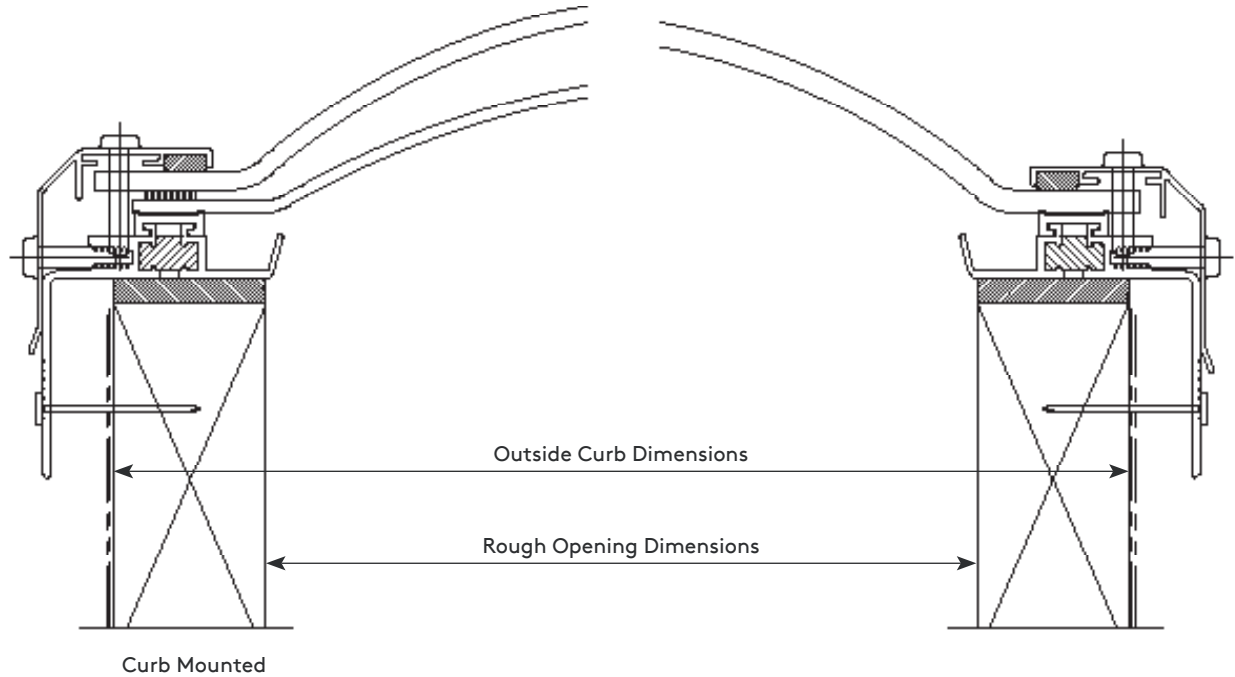


# Series 1200 FM Approved Skylight Product Data Sheet



# Application

Skylights shall be fully factory assembled, consisting of a polycarbonate dome with a CC-1 classification that is sealed by interior and exterior gaskets. The skylight frame is fabricated from 6063-T5 heliarc welded aluminum with a poured and debridged cavity with polyurethane thermal break material to prevent thermal losses through the frame and the formation of condensation on its interior surfaces. The skylight frame has an integral evaporative condensate channel. The aluminum retaining cap is fixed both horizontally and vertically (staggered) with #10 corrosive resistant fasteners at 6" maximum spacing. The skylight frame shall be installed on a minimum 1-1/2" wide curb furnished by others.



## Dimensions\*

Model Size	Rough Opening Dimensions	Outside Curb Dimensions	Model Size	Rough Opening Dimensions	Outside Curb Dimensions	Model Size	Rough Opening Dimensions	Outside Curb Dimensions
2496	24" x 96"	27" x 99"	4896	48" x 96"	51" x 99"	6072	60" x 72"	63" x 75"

Note: Recommended net outside curb dimensions (OCD) to be 1-1/4" smaller than net frame inside dimensions (IFD).

# Technical Specifications

<b>Combustion Classification</b>	CC1
<b>Factory Mutual</b>	FM 4431 Approved [FM listed under the following: ALT(F)] Wind Uplift: 150psf Hail Resistance: Severe Hail Rating

## Example Model Number

4896-ALT(F)-CMT-2-CPC/WPC-MF

## Features

1. Extruded 6063-T5 mill finish aluminum frame
2. Curb mounted (CM) or Curb mounted with EPDM tape (CMT)
3. Monolithic polycarbonate outer glazing
4. Prismatic acrylic inner glazing
5. Radial triarch shaped dome
6. Santoprene thermoplastic gaskets
7. Black butyl retainer cap sealant
8. Polyurethane glazing sealants

## Skylight Options

1. Single (1) or double (2) glazed triarch dome(s)
  - a. Clear or white monolithic polycarbonate outer dome
  - b. White prismatic acrylic inner dome

## Accessories

1. Roof Safety
  - a. External safety cages (SCAGE)
  - b. Safety screens (SSCRN)
  - c. Security grills (SG)

## Warranty

For a period of ten (10) years from the date of purchase, Kingspan Light + Air warrants that Series 1200 FM Approved polycarbonate skylights will be free from defects in material and workmanship and that no water will leak through the commercial curb top or self flashed skylight. This warranty also includes coverage against documented 2" hail stones or smaller as well as cracking or crazing of polycarbonate dome material that would result in a water leak. Exceptions apply, see 10-year warranty document.

## IMPORTANT SAFETY NOTE:

The owner must take steps to protect personnel who may be in the area of the skylight or smoke vent. The owner should restrict access only to authorized personnel who have been adequately cautioned as to the location of the skylights or smoke vents and informed of the warnings below. Because there is a risk of fall and resulting personal injury, we recommend protective guardrails, internal safety screens or external cages around all skylights and smoke vents, as well as the use of fall restraint systems. We also recommend that skylights and smoke vents are inspected annually for evidence of damage, such as cracks or penetrations. Any damage should be repaired immediately, and the area beneath the skylight or smoke vent should be safeguarded against falling objects.

---

## Kingspan Light + Air

### North American Headquarters

28662 N. Ballard Dr.

Lake Forest, IL 60045

Toll Free: +1 800 759 6985

T: +1 847 816 1060

F: +1 847 816 0425

E: [info@kingspanlightandair.us](mailto:info@kingspanlightandair.us)

[www.kingspanlightandair.us](http://www.kingspanlightandair.us)



To ensure you are viewing the most recent and accurate product information, please scan the QR code above

Care has been taken to ensure that the contents of this publication are accurate, but Kingspan Limited and its subsidiary companies do not accept responsibility for errors or for information that is found to be misleading. Suggestions for, or description of, the end use or application of products or methods of working are for information only and Kingspan Limited and its subsidiaries accept no liability in respect thereof.

For the product offering in other markets please contact your local sales representative or visit [kingspan.com](http://kingspan.com)

© Kingspan and the Lion Device are Registered Trademarks of the Kingspan Group plc in the US, Canada and other countries.

© Kingspan Light + Air

MKT-PDS-1201-2404

