



QuadSpan™ Product Brochure

Formerly Quadwall™

Polycarbonate Translucent Skylights





Contents

Company Overview **3**

About QuadSpan™ **4-5**

Innovative Technology **6-7**

System Configurations **8-10**

Specialty Systems 8-9

Retrofit Applications 10

Planet Passionate **11**

Kingspan Light + Air reserves the right to modify the design, change or discontinue products without prior written notice. The information contained in this brochure is based on data which are believed to be reliable, but no liability is assumed for any method or manner of use by the purchaser.

About Us

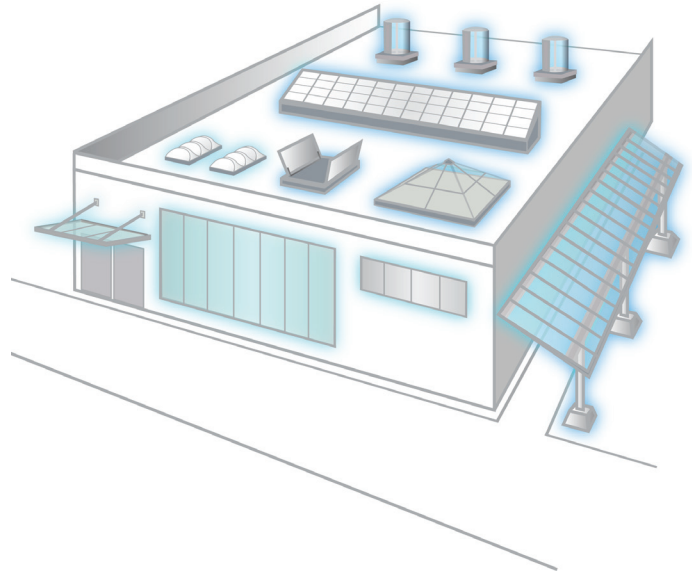
Who We Are

Kingspan Light + Air (KLA) is an award-winning innovator of daylighting solutions for high-performance building envelopes.

We are a pioneer and leader of the daylighting industry, and continually innovate so clients never have to choose between efficiency, style, and safety. And our focus on sustainability is instilled at every level of the company and at every step in the manufacturing process.

Our global team of highly-skilled and experienced professionals and extensive manufacturing capabilities make us a trusted partner in the ever-changing world of modern construction. Together, we leverage our knowledge and expertise to serve as one of the leading daylighting consultants for the architectural community and building industry.

Never Compromise. Always Innovate.



The KLA Advantage

You shouldn't have to compromise your design. We want to enable architects to achieve the highest levels of building performance without sacrificing aesthetics.

This is why we team up with architects, contractors, and building owners to develop highly versatile daylighting systems. We will work with you from design concept through engineering and installation - and beyond - to ensure high levels of performance and quality.

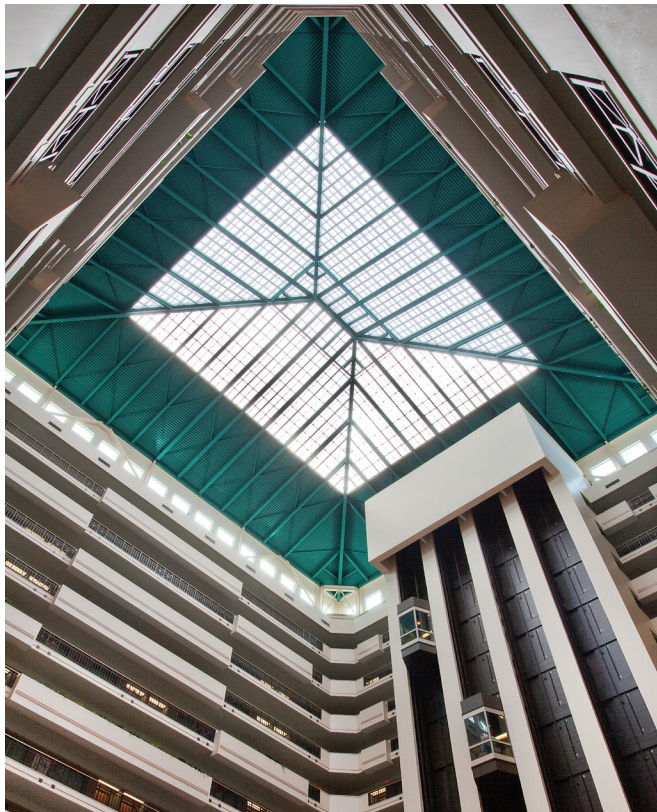
Our expansive line-up of daylighting and natural ventilation solutions - from custom skylights and wall systems to tubular daylighting devices to canopies and small unit skylights - means that we can provide you with a system that fits your project's specific needs.



About QuadSpan™ Skylights

Kingspan Light + Air utilizes the latest in daylighting technology to provide the market with efficient and effective QuadSpan™ (formerly Quadwall®) skylight solutions to meet your daylighting needs, and enhance the environments where we work, learn, play, and live.

We offer a wide variety of skylight systems - ranging in scale from small and simple to monumental and complex. These skylights are available in a variety of standard shapes, including vaults, ridges, single-slopes, pyramids, and more. We also work with architects and designers to develop custom skylight systems. Our systems are an impactful design feature that can make a space more inviting, and create an open and comfortable environment for occupants.



Product Highlights

- Vaults, ridges, single slopes, pyramids, polygons, and curved domes available – plus fully custom shapes
- Removable skin technology (RST) allows interior or exterior glazing to be replaced independently
- Long panel assemblies permit fast, easy installation
- Panels are pre-assembled for quality control and can be insulated for enhanced thermal protection
- Minimal exterior aluminum support members create a clean aesthetic
- Triple tooth glazing connection is able to withstand extreme loading
- Wide variety of standard colors with bi-color, custom colors and color matching available
- Warranted to maintain their translucence, the tight-cell design increases durability and enhances light diffusion
- Class A Roof Assembly and sound reduction configurations are available
- Additional specialty options include High Velocity Hurricane Zone (HVHZ) and forced entry resistance systems





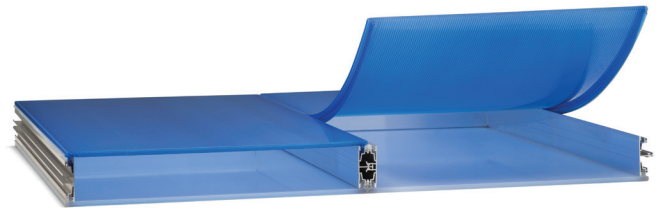
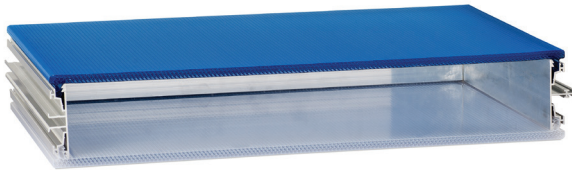
Image by Benny Chan / Fotoworks

Our Innovative Technology

Two-Panel System Benefits

Utilize a single and trusted system designed to adapt to meet your building performance needs. We understand that due to budget, occupancy, and building type, not all building envelopes are made equal. Our systems are made up of two independent glazing panels with an internal cavity between them that can be modified with additional inserts, customizing the performance of the system based on the building's specific requirements.

- Removable Skin Technology - individual panels can be changed without interrupting ongoing building operations or compromising the integrity of the building envelope
- Zero to low maintenance systems
- Outstanding light transmission to thermal performance ratio
- Multi-Color options
- Nano-Cell Technology - significantly improves quality and balanced distribution of glare-free natural light
- Excellent light transmission to impact loading ratio
- Long panel capabilities - up to 38'
- Most aluminum and polycarbonate components are recyclable



Multi-Color Panel Options

A different color can be selected for each of the two independent glazing panels that make up the system.

While glazing color combinations offer an opportunity for creativity, they also serve a practical purpose when tailoring the performance of the system. Each glazing color has an inherent solar performance. By varying the combination of the glazing colors, not only can you create unique visual elements, but you can also customize the solar performance of the system. An optional matte finish on the panels will increase their ability to diffuse light and eliminate glare as well.



Benefits of Working with Kingspan Light + Air

Design Assistance

Our team is ready to assist you with your daylighting needs. If you're not sure where to begin, or what the best solution is for your next project, our team of daylighting experts and engineers will work with you to find the right solution. We will walk you through each step of the process, from design to manufacturing to installation and beyond.

Decades of Experience

We're no strangers to translucent skylights... in fact, our roots run deep in the industry. In recent years, Kingspan Light + Air acquired CPI Daylighting and Major Industries, Inc. - manufacturers of translucent skylight systems. Our combined industry expertise and experience allow us to work through your toughest daylighting challenges.

Expert Installation

We work with certified installers who have the product training and know-how to install your system the proper way the first time. We'll work with you throughout the process to ensure that the system you receive is functioning properly.

Specialty Systems

Specialized Performance Options

Whether you need a system that can reduce sound transmission or enhance thermal performance, we can help you achieve your performance goals.



- Additional Insulation
- LED Lighting
- Sound Reduction (STC)



Additional Insulation

Graphics + LED Lighting

Graphics and LED lighting can be useful in creating an iconic look or to reinforce a brand on the system's interior or exterior panels, making your building stand out as a beacon of creativity, day or night.

Long Clear Spans

Due to the design of the internal support structure, the two-panel system can achieve long spans and still comply with deflection and code requirements. The ability to span floor-to-slab minimizes the necessary support structures, thus reducing material and labor costs. It also improves the aesthetic quality of the system.

Nano-Cell® Glazing

Our translucent polycarbonate glazing is precision-engineered with Nano-Cell® technology. This specialized panel extrusion results in the cells measuring smaller than 0.18 inches, providing superior durability and prolonged resistance to impact. The unique cell structure significantly improves the quality and balanced distribution of glare-free natural light.



Renovations & Retrofits

Why Renovate?

- Outdated or deteriorating systems are under-performing
- Storm or occupant-related damage
- Deterioration is causing leaks and potential structural failures

Retrofits and renovations can play a key role in revitalizing environments that are suffering from lack of adequate natural lighting. Deteriorating skylights often block out blue spectrum light, which accounts for the majority of health benefits associated with natural light.

We offer a variety of simple and effective solutions designed to re-glaze, over-glaze, or replace existing systems that are under-performing or are in desperate need of repair due to damage or deterioration.

We renovate: glass, fiberglass, acrylic, and polycarbonate.



Re-glaze

The glazing system will be replaced and the existing structure will be evaluated and reused when possible.

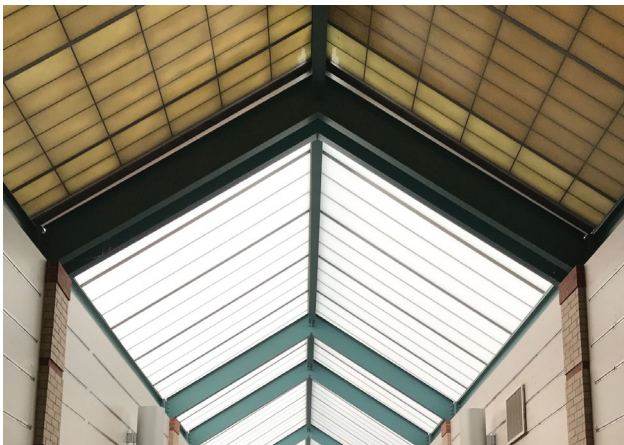
Over-glaze

Our systems can be designed to envelop leaking systems if their performance is otherwise uncompromised. This option is typical for systems that provide enough light, but may be deteriorating, leaking, or need additional insulation performance.

Replace

The entire existing system is disassembled and removed, and a new system will be installed in its place.

During



After



Our Commitment to Sustainable Design



ENERGY



CARBON



CIRCULARITY



WATER



What is Planet Passionate?

At Kingspan, we want to play our part. We believe advanced materials, building systems and digital technologies hold the key to addressing these issues.

Working in partnership with the industry, and through our new IKON innovation centre in Ireland and our Planet Passionate global sustainability program, we are confident that together we can:

1. Move to a clean energy future
2. Manage the earth's resources more sustainably
3. Protect our natural environment

Planet Passionate is Kingspan's ambitious 10-year global sustainability program which aims to impact three global issues:

- Climate change
- Circularity
- Protection of our natural world

By setting ourselves challenging targets in the areas of energy, carbon, circularity and water, we aim to make significant advances in the sustainability of both our business operations and products.

Learn more about Planet Passionate by visiting <https://www.kingspan.com/us/en/about-us/Planet-Passionate/>.



Kingspan Light + Air

North American Headquarters

28662 N. Ballard Dr.

Lake Forest, IL 60045

Toll Free: +1 800 759 6985

T: +1 847 816 1060

F: +1 847 816 0425

E: info@kingspanlightandair.us

www.kingspanlightandair.us



To ensure you are viewing the most recent and accurate product information, please scan the QR code above

Care has been taken to ensure that the contents of this publication are accurate, but Kingspan Limited and its subsidiary companies do not accept responsibility for errors or for information that is found to be misleading. Suggestions for, or description of, the end use or application of products or methods of working are for information only and Kingspan Limited and its subsidiaries accept no liability in respect thereof.

For the product offering in other markets please contact your local sales representative or visit kingspan.com

© Kingspan and the Lion Device are Registered Trademarks of the Kingspan Group plc in the US, Canada and other countries.

© Kingspan Light + Air

MKT-BCH-0005-2403

