



Liteway™ Product Data Sheet

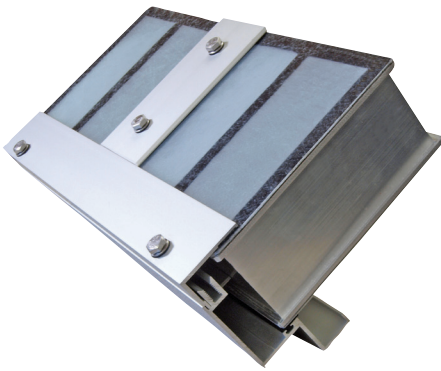
Formerly Guardian 275® canopies from Major Industries, Inc.

Fiberglass Reinforced Polymer (FRP) Canopy + Walkway Systems



Application

Liteway™ translucent panel canopy and walkway systems (formerly Guardian 275® by Major Industries, Inc.) consist of two fiberglass reinforced polymer (FRP) face sheets bonded to an aluminum grid core. Panels are held in place by an aluminum framing system, EPDM gasketing and butyl sealants. Liteway™ panels are available in sizes up to 5 feet wide and 20 feet long (contact Kingspan Light + Air for details as loading requirements may vary by project location). Custom and pre-engineered systems available, with select sheet color options and finish options including anodize and AAMA 2604/2605 paint.



Features

1. 2.75" panel thickness
2. Extruded aluminum frame
3. Ultimate Series™ face sheet technology
4. High performance gasketing and sealants
5. Guttered framing for enhanced moisture management
6. Maximum panel widths of 5 feet
7. Maximum panel lengths up to 20 feet (contact KLA for specific numbers related to your project location)
8. Anodized and paint finishes - standard and custom

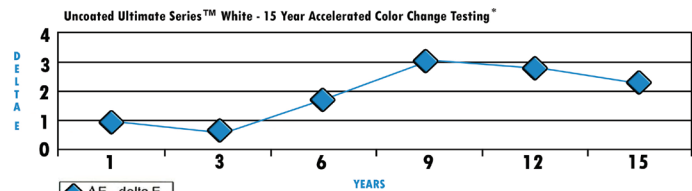
Options

1. Mixed glazed and unitized systems available
2. Curved systems
3. Sheet color options include Desert Rose, Tan, Aqua - custom colors available - contact us for details and availability

Ultimate Series™ Face Sheet Technology

Ultimate Series™ exterior face sheets have been put through rigorous testing and offer exceptional weathering performance, all backed by a 25 year fiberbloom warranty and available 20 year color change warranty.

The advanced resin system and polymer coating combination in the Ultimate Series™ provides long-term durability and high quality, diffused natural daylighting.



Kingspan Light + Air reserves the right to improve products without notice as the result of ongoing R&D and/or third-party compliance.

Testing/Performance

Test Description	Test Procedure	Results & Comments
Ignition Temperature, Smoke Density, and Combustibility Classification	ASTM D635, D1929, E84, UL 723	Complies with Ignition Temperature and Smoke Density defined in IBC Section 2606.4. Exterior Sheet Combustibility Class: CC2. Interior Sheet Combustibility Class: CC1. See ICC-ESR-2855 for full details.
System Resistance to Fire	ASTM E108	Class A and C Roof Construction
Uniform Load Structural / Spans	ASTM E330	Span 6 ft. to 15 ft. NOTE: PROJECT SPECIFIC SPANS MUST BE CALCULATED USING PROJECT SPECIFIC VARIABLES
Impact Strength	UL 972	Standard Exterior Sheet - five impacts at 50 ft-lbs High-Impact Exterior Sheet - 200 ft-lbs - no penetration High Impact Interior Sheet - 245 ft-lbs - no penetration Class "A" Sheet - 245 ft-lbs - no penetration
Adhesive Bond Strength	ASTM D1002 (shear) - Un-aged ASTM D1037 - Aged ASTM C297 (tensile) - Un-aged ASTM D1037 - Aged	lbf=Min 310, Avg 563, Max 837 lbf=Min 836, Avg 1212, Max 1669 Load=557.3 lbf Load=913.6 lbf

Kingspan Light + Air (KLA) is engaged in continuing research to improve its products. Therefore, the right is reserved to modify or change the data provided in this Technical Summary without notice. This is descriptive literature and does not constitute warranties, expressed or implied. For statement of warranty, contact KLA. The above tests were performed and verified by certified independent third parties. If you have questions on a specific test or product, please contact a KLA Representative. Kingspan Light + Air does not assure compliance with any plans or specifications and it remains the responsibility of the customer to confirm compliance of the product with applicable local, state, and national codes and other laws or regulations.



Kingspan Light + Air

North American Headquarters

28662 N. Ballard Dr.

Lake Forest, IL 60045

Toll Free: +1 800 759 6985

T: +1 847 816 1060

F: +1 847 816 0425

E: info@kingspanlightandair.us

www.kingspanlightandair.us



To ensure you are viewing the most recent and accurate product information, please scan the QR code above

Care has been taken to ensure that the contents of this publication are accurate, but Kingspan Limited and its subsidiary companies do not accept responsibility for errors or for information that is found to be misleading. Suggestions for, or description of, the end use or application of products or methods of working are for information only and Kingspan Limited and its subsidiaries accept no liability in respect thereof.

For the product offering in other markets please contact your local sales representative or visit kingspan.com

© Kingspan and the Lion Device are Registered Trademarks of the Kingspan Group plc in the US, Canada and other countries.

© Kingspan Light + Air

MKT-PDS-0006-2404

