

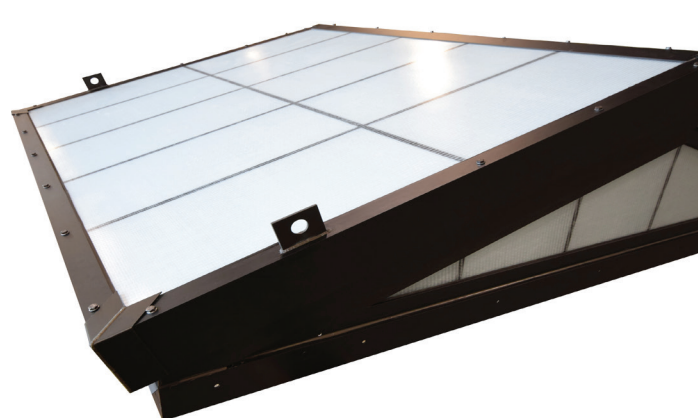
Light + Air  
North America



# GridSpan™

Formerly Guardian 275® from Major Industries, Inc.

Translucent Fiberglass Reinforced Skylights





---

# Contents

---

---

<b>Company Overview</b>	<b>3</b>
-------------------------	----------

---

<b>About GridSpan™</b>	<b>4-5</b>
------------------------	------------

---

<b>System Details</b>	<b>6-9</b>
-----------------------	------------

Innovative Technology	6-7
Specialty Systems	8-9
Retrofits and Renovations	10

---

<b>Planet Passionate</b>	<b>11</b>
--------------------------	-----------

Kingspan Light + Air reserves the right to modify the design, change or discontinue products without prior written notice. The information contained in this brochure is based on data which are believed to be reliable, but no liability is assumed for any method or manner of use by the purchaser.

# About Us

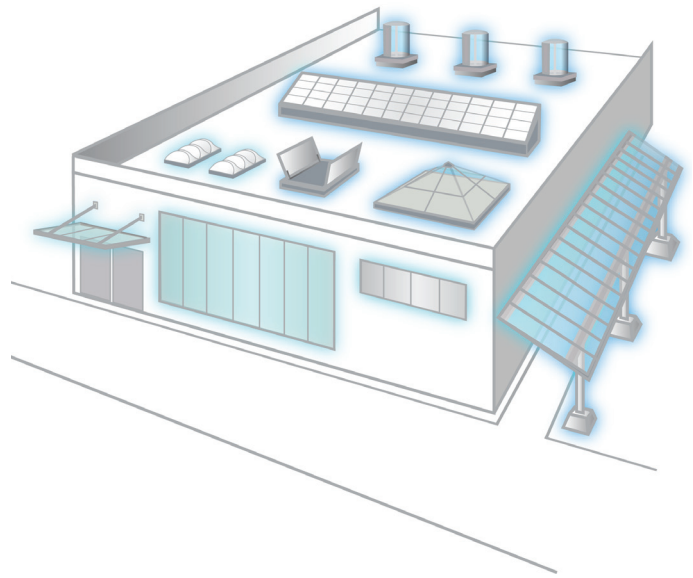
## Who We Are

Kingspan Light + Air (KLA) is an award-winning innovator of daylighting solutions for high-performance building envelopes.

We are a pioneer in the daylighting industry, and continually innovate so clients never have to choose between efficiency, style, and safety. And our focus on sustainability is instilled at every level of the company and at every step in the manufacturing process.

Our global team of highly-skilled and experienced professionals and extensive manufacturing capabilities make us a trusted partner in the ever-changing world of modern construction. Together, we leverage our knowledge and expertise to serve as one of the leading daylighting consultants for the architectural community and building industry.

Never Compromise. Always Innovate.



## The KLA Advantage

You shouldn't have to compromise your design. We want to enable architects to achieve the highest levels of building performance without sacrificing aesthetics.

This is why we team up with architects, contractors, and building owners to develop the most versatile daylighting systems on the market. We will work with you from design concept through engineering and installation - and beyond - to ensure high levels of performance and quality.

Our expansive line-up of daylighting and natural ventilation solutions - from custom skylights and wall systems to tubular daylighting devices to canopies and small unit skylights - means that we can provide you with a system that fits your project's specific needs.



# GridSpan™

Formerly Guardian 275® from Major Industries, Inc.

From new construction to retrofit applications, GridSpan™ fiberglass reinforced polymer (FRP) panel skylights and roof assemblies (formerly Guardian 275® from Major Industries, Inc.) are a dependable and cost-effective way to bring glare-free natural light into any space. They're engineered and built to be long-lasting, lightweight, structurally strong and to provide great thermal performance.

GridSpan™ skylights help eliminate UV damage to interiors, can assist in reducing HVAC loads, and provide energy savings by reducing the need for continuous artificial lighting. GridSpan™ skylights can also eliminate the need for costly interior or exterior shading devices as they diffuse direct sunlight throughout a space. They are designed for rapid and secure installation, with pre-assembled options available, and their combination of EPDM gasketing and integral guttering provide excellent performance in tough environments.



## Product Highlights

- Numerous configurations available - including ridges, pyramids, single slopes, polygons, barrel vaults and curved systems
- Lightweight system allows for greater design flexibility
- Standard 2-3/4" panels are available up to 5' x 20' (4" panel system also available)
- A variety of grid sizes and patterns are available (see page 6 for illustration)
- Insulation options and thermal breaks available
- Built-in moisture management
- Mixed glazed systems available - combining translucent panels with glass glazing
- Long warranties - 25 year fiberbloom and up to 20 year color change
- Hurricane and blast protection configurations available



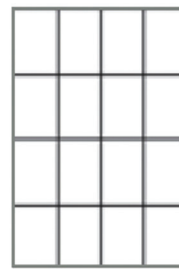
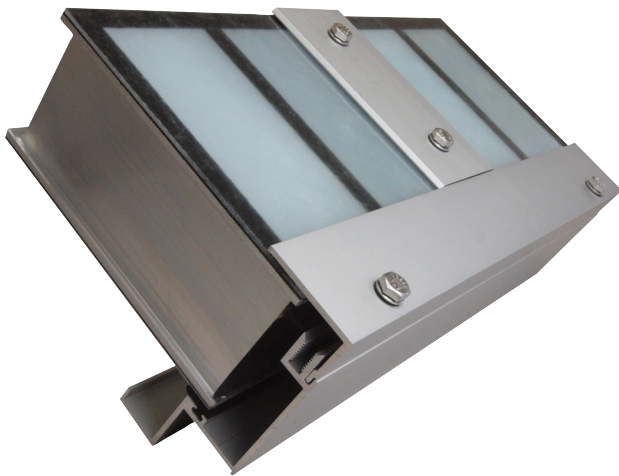


# Our Innovative Technology

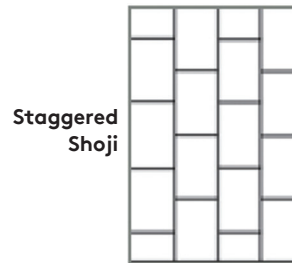
## Sandwich Panel System Benefits

GridSpan™ systems are made up of two FRP face sheets supported by an internal aluminum grid core. The sheets provide light control and durability, while the interior grid provides support for the panels and adds to the overall system strength. With individual glazing panels up to 5 feet wide and 20 feet long (depending on load requirements), GridSpan™ panels can reduce the amount of support needed, as well as points where air and water might penetrate. The area within the panels can also be filled with insulation for enhanced thermal performance.

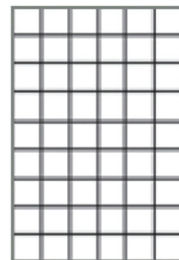
- Ultimate Series™ face sheets developed for long life and durability
- Large glazing panels are lightweight and easy to install
- Excellent solar heat gain performance
- Multiple color options including aqua, ice blue, desert rose and custom color matching (contact us for availability)
- Available fastener covers provide a clean exterior aesthetic
- Long panel capabilities - up to 20'
- Thermally broken panel and framing option
- Colored insulation option for a stained glass-like look



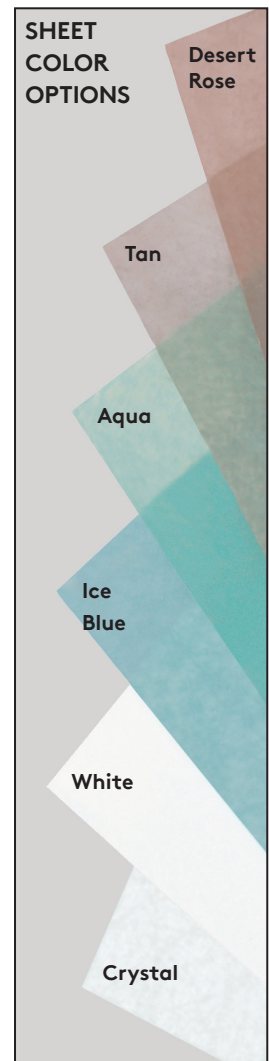
In-Line  
Shoji



Staggered  
Shoji



Tuckerman



\*Colors shown for comparative use only and may differ slightly from actual product. Contact us for sheet color samples.





## Benefits of Working with Kingspan Light + Air

### Design Assistance

Our team is ready to assist you with your daylighting needs. If you're not sure where to begin, or what the best solution is for your next project, our team of daylighting experts and engineers will work with you to find the right solution. We will walk you through each step of the process, from design to manufacturing to installation and beyond.

### Decades of Experience

We're no strangers to translucent skylights... in fact, our roots run deep in the industry. In recent years, Kingspan Light + Air acquired CPI Daylighting and Major Industries, Inc. - manufacturers of translucent skylight systems. Our combined industry expertise and experience allow us to work through your toughest daylighting challenges.

### Expert Installation

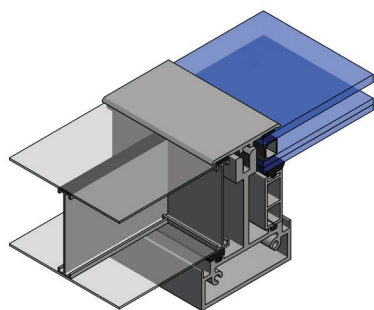
We work with certified installers who have the product training and know-how to install your system the proper way the first time. We'll work with you throughout the process to ensure that the system you receive is functioning properly.

# Specialty Systems

## Systems for Nearly Any Daylighting Challenge

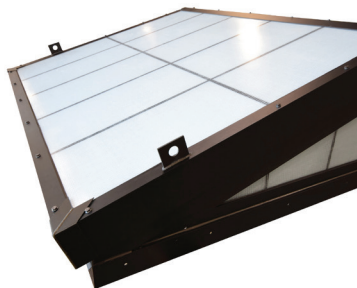
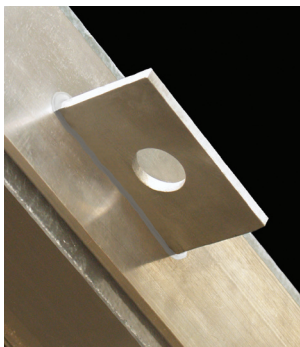
GridSpan™ is available in a variety of specialty configurations, and can be custom-made to conquer whatever challenges your next project might bring. From our vast array of color and finish options to removable systems and integrated glass glazing, our ability to flex with your design needs is just one of the many reasons to choose GridSpan™ skylights for your next project.

If you don't see the right daylighting solution here, please contact us to see if one of our other lines of translucent systems – including polycarbonate multi-wall and tubular daylighting devices – might be a fit, or if we can work with you to create a fully customized solution.



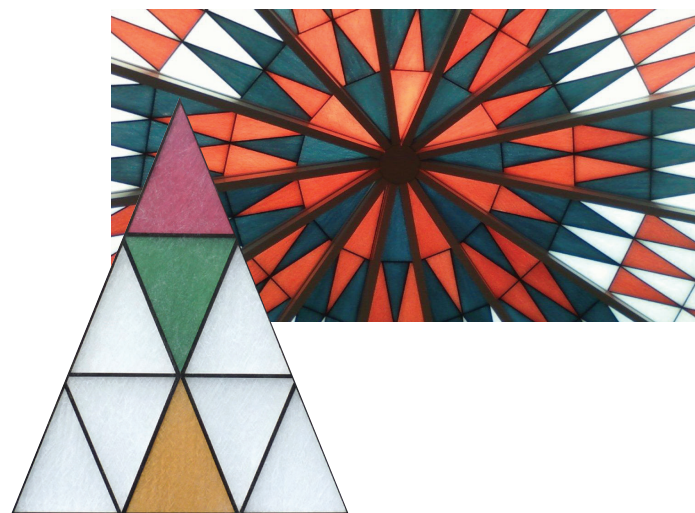
### Mixed Glazed Systems

GridSpan™ panels can be used with a wide range of commercial window systems. Our system adapters allow us to accommodate 1" glass or 25mm polycarbonate multi-wall. Modular systems can also be custom engineered and built to meet your design needs. Contact us for additional information.



### Removable Skylights

GridSpan™ skylights can be configured with lifting hooks for drop-on installation or future building access (available in stainless steel for long-term durability). Mixed glazed packages can also be designed to combine energy efficient translucent panels with a removable top section using clear or colored glazing panels. Typical applications include MRI centers, water treatment plants and daylighting over large machinery.



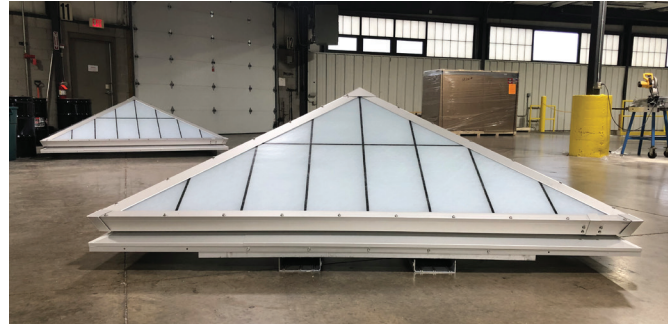
### Spectra-Grid™ Colored Insulation

Our translucent insulation can be custom-colored to create dynamic visual impact or subtle, understated tones. It's the perfect low-cost color solution for church designs that need an inexpensive stained glass look, restaurant plans that include corporate logo colors or learning facilities that need the excitement of school colors!

# Specialty Systems

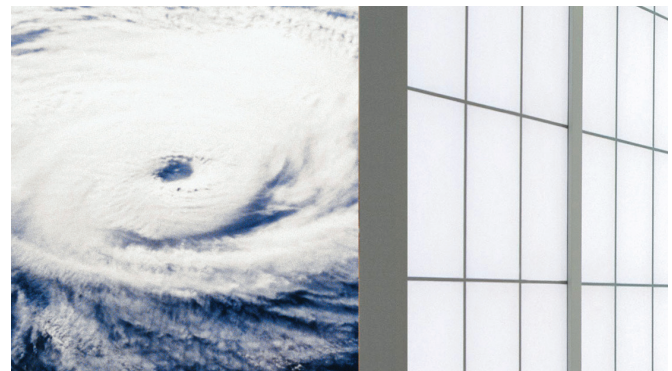
## Pre-assembled Systems

GridSpan™ systems are available in pre-assembled configurations for ease of installation. When shipped ready to be installed, you can save on field labor time and costs. Contact us for specific details.



## Hurricane Systems

GridSpan™ hurricane systems can be used in a number of hurricane zones in North America, including most Florida counties and the Texas gulf coast. Extensive impact testing has also been conducted in conformance with ASTM E1886 and ASTM E1996 to ensure high levels of performance in the roughest situations. Contact us for information related to your specific location's code requirements.



## Custom Grid Patterns

GridSpan™ systems feature panels with an internal grid core, but beyond our standard options (shoji, staggered shoji and tuckerman), we offer the flexibility of custom grid patterns to allow you to create a unique and eye-catching look. Contact us with your design ideas and we'll work with you to create a pattern that fits your needs and the structural requirements of the system.



## Blast Protection

GridSpan™ skylights were found to meet or exceed the following anti-terrorism performance requirements:

- Department of Defense (DoD) - UFC 4-010-01 and ISC Security Design Criteria Level C loading

\*Please note that in the latest UFC 4-010-01 standards, lightweight plastic translucent systems are not required to meet blast ratings. Consult KLA for details and questions related to blast protection systems.



# Renovations & Retrofits

## Why Renovate?

- Outdated systems that are under-performing
- Storm or occupant-related damage
- Deterioration causing leaks and potential structural failures

Retrofits and renovations can play a key role in revitalizing environments that are suffering from lack of adequate natural lighting. Deteriorating skylights often block out blue spectrum light, which accounts for the majority of health benefits associated with natural light.

We offer a variety of simple and effective solutions designed to re-glaze or replace existing daylighting systems that are under-performing or are in desperate need of repair due to damage or deterioration.

For retrofit applications, GridSpan™ skylight systems are lightweight, allowing for flexibility in design, and they can be configured with mixed glazing adapters that allow for integration of glass glazing.

If you're looking to re-glaze an existing translucent panel system, please contact us. We review each request individually to determine if it's a candidate for retrofit or complete replacement.



# Our Commitment to Sustainable Design



## ENERGY



## CARBON



## CIRCULARITY



## WATER



### What is Planet Passionate?

At Kingspan, we want to play our part. We believe advanced materials, building systems and digital technologies hold the key to addressing these issues.

Working in partnership with the industry, and through our new IKON innovation centre in Ireland and our Planet Passionate global sustainability program, we are confident that together we can:

1. Move to a clean energy future
2. Manage the earth's resources more sustainably
3. Protect our natural environment

Planet Passionate is Kingspan's ambitious 10-year global sustainability program which aims to impact three global issues:

- Climate change
- Circularity
- Protection of our natural world

By setting ourselves challenging targets in the areas of energy, carbon, circularity and water, we aim to make significant advances in the sustainability of both our business operations and products.

Learn more about Planet Passionate by visiting <https://www.kingspan.com/us/en/about-us/Planet-Passionate/>.



---

## Kingspan Light + Air

### North American Headquarters

28662 N. Ballard Dr.

Lake Forest, IL 60045

Toll Free: +1 800 759 6985

T: +1 847 816 1060

F: +1 847 816 0425

E: [info@kingspanlightandair.us](mailto:info@kingspanlightandair.us)

[www.kingspanlightandair.us](http://www.kingspanlightandair.us)



To ensure you are viewing the most recent and accurate product information, please scan the QR code above

Care has been taken to ensure that the contents of this publication are accurate, but Kingspan Limited and its subsidiary companies do not accept responsibility for errors or for information that is found to be misleading. Suggestions for, or description of, the end use or application of products or methods of working are for information only and Kingspan Limited and its subsidiaries accept no liability in respect thereof.

For the product offering in other markets please contact your local sales representative or visit [kingspan.com](http://kingspan.com)

© Kingspan and the Lion Device are Registered Trademarks of the Kingspan Group plc in the US, Canada and other countries.

© Kingspan Light + Air

MKT-BCH-0003-2403

