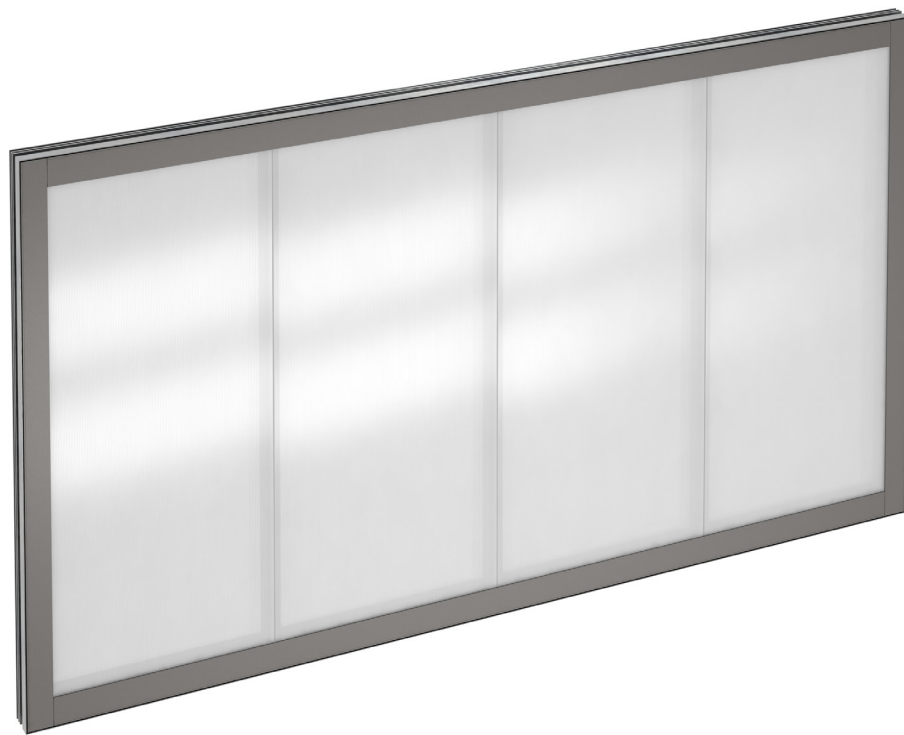




UniQuad[®] Translucent Windows

Product Data Sheet

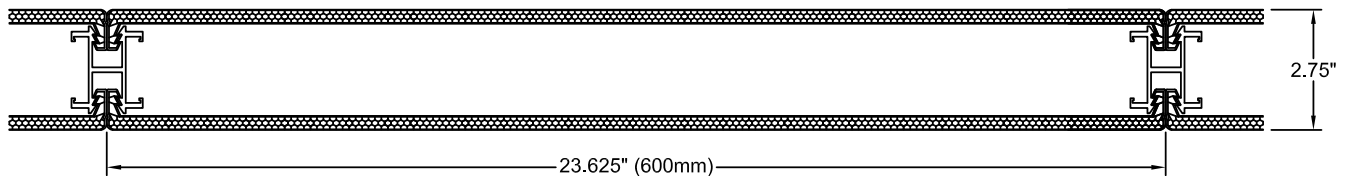


Application

Kingspan Light + Air’s energy-efficient, NFRC-certified UniQuad® Translucent Windows are versatile enough for new construction and renovation projects alike, and offer the benefits of features like custom sizes, multi-color translucent panels and supplemental insulation. Engineered to seamlessly integrate into building openings, these modular panels streamline installation to save time and reduce job costs, and can help to meet LEED building requirements. UniQuad® Translucent Windows are warrantied to maintain their translucence over time, letting in greater, better light that can boost health and productivity.

Product Specifications

System height	Up to 6 ft
System width	Limitless, panelized in 12 ft (maximum) sections
System thickness	3" panel and frame assembly
Panel thickness	2.75 in
Panel width	2 ft nominal (23.625 in, 600mm)
Panel weight	1.5-2 lbs/ft ²
Technology	Removable Skin Technology (RST) allows for the removal of the exterior panel while the interior panel remains in place
Panel joint	Structural member, mechanically interlocking
Exterior skin	8 mm translucent polycarbonate panel with Nano-Cell® technology
Interior skin	8 mm translucent polycarbonate panel with Nano-Cell® technology
Color options	Standard - clear matte, white matte, ice white matte, blue matte, green matte Consult for other color options, including bronze matte, gray matte, white pearl low-e and other exotic colors. NOTE: all colors available with non-matte finish upon request
Multi-color system	Option to select different colors for interior and exterior glazing panels



Technical Specifications

Performance

Test description	Test procedure	Results and comments
Code compliance, IBC	ICC - ES report ESR-1253	Compliance as specifically detailed in the ESR-1253 report
Uniform Load Structural / Spans	ASTM E330	Up to 6 ft at 40 psf
Large Missile Impact, Cyclic loading	ASTM E1996 / ASTM E1886	Missile Impact Level D, Wind Zone 4 Cyclic pressure - 40 psf
Water penetration	ASTM E331	Pass - 15 psf
Air infiltration + exfiltration	ASTM E283	Pass - 6.24 psf
U-factor	NFRC 100, 700	0.16 to 0.30
SHGC (center of glass)	Calorimeter	0.13 to 0.41, subject to color selections
Visible Light Transmittance (center of glass)	ASTM E972, NFRC 202	0.38 to 0.04 center of glass
Fire	ASTM E1929, D2843, D635	Approved light transmitting plastic with CC1 rating
Interior flame spread	ASTM E84, CAN/ULC, S102.2-M88	Class A rating
Sound Transmission Loss - STC	ASTM E90, E413, E1332, E2235	Standard STC rating is 22

Warranty

For a period of ten (10) years from date of delivery, Kingspan Light + Air warrants that the translucent panels will not lose translucence, the color shall not change and no delamination will occur. For additional details, please contact your sales representative.

Kingspan Light + Air

North American Headquarters

28662 N. Ballard Dr., Lake Forest, IL 60045

Toll Free: +1 (800) 759 6985

T: +1 (847) 816 1060

F: +1 (847) 816 0425

E: info@kingspanlightandair.us

www.kingspanlightandair.us

Notes

For additional technical information and/or daylighting systems design consultation, contact Kingspan Light + Air for your specific needs. Care has been taken to ensure that the contents of this publication are accurate, but Kingspan Limited and its subsidiary companies do not accept responsibility for errors or for information that is found to be misleading. Suggestions for, or description of, the end use or application of products or methods of working are for information only and Kingspan Limited and its subsidiaries accept no liability in respect thereof.