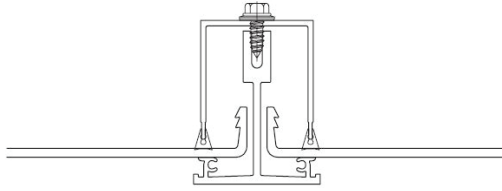
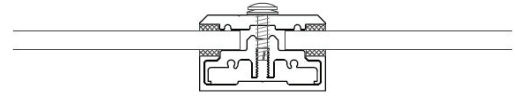


U-Lite System



Sleekline System



System																		
Panel Assembly	Standing-Seam design: monolithic polycarbonate glazing panels Panel upstands ensure that the panels remain engaged, even under high loads. The standing seam also ensures long term water-proofing	Monolithic polycarbonate glazing panels with traditional glazing bar clamping bar connection Under loading, panels can disengage and pull out. Gaskets can deteriorate over time and result in leaks																
Panel Connector	Standing-Seam structural aluminum glazing bar for superior water-proofing	Traditional glazing bar and clamping bar. Panel can potentially disengage under high loads																
Panel Length	Glazing panels are available up to 40 ft.	Panel size is limited to what is currently available in the market via 3rd party																
Glazing Colors	Glazing panels are available in a wide range of standard colors, and custom colors are available upon request. All colors adhere to our standard delivery time	Color availability is limited based on what the 3rd party glazing panel manufacturer has in stock																
Spanning Capabilities (based on limitations per IBC 1604.3)	<p style="text-align: center;">4 mm</p> <table border="1" style="margin-left: auto; margin-right: auto;"> <thead> <tr> <th>Span</th> <th>Load</th> </tr> </thead> <tbody> <tr> <td>6.5 ft.</td> <td>80 psf</td> </tr> <tr> <td>8.25 ft.</td> <td>40 psf</td> </tr> <tr> <td>10.5 ft.</td> <td>20 psf</td> </tr> </tbody> </table>	Span	Load	6.5 ft.	80 psf	8.25 ft.	40 psf	10.5 ft.	20 psf	<p style="text-align: center;">6 mm</p> <table border="1" style="margin-left: auto; margin-right: auto;"> <thead> <tr> <th>Span</th> <th>Load</th> </tr> </thead> <tbody> <tr> <td>2 ft.</td> <td>80 psf</td> </tr> <tr> <td>3 ft.</td> <td>40 psf</td> </tr> <tr> <td>4 ft.</td> <td>20 psf</td> </tr> </tbody> </table>	Span	Load	2 ft.	80 psf	3 ft.	40 psf	4 ft.	20 psf
Span	Load																	
6.5 ft.	80 psf																	
8.25 ft.	40 psf																	
10.5 ft.	20 psf																	
Span	Load																	
2 ft.	80 psf																	
3 ft.	40 psf																	
4 ft.	20 psf																	
Fire Performance per ASTM D 635 & ASTM E 84	Burn Extent - CC1 Rated Flame Spread / Smoke - Class A	Burn Extent - CC1 Rated Flame Spread / Smoke - Class B Code requires Class A material if system is not sprinklered																
Impact Testing	Large Missile Impact - 360 lb-ft. Impact Level D Concentrated Load - 600 lb-ft. (1 ft ² area) & 400 lb-ft. (3" diameter)	No published test data available																
OSHA Life Safety	OSHA Life Safety Compliant, CAL/OSHA Compliant	No published test data available																
UV Protection	Standard - UV protection co-extruded on both sides of the glazing panel	Standard - UV protection on only one side of the glazing panel, with the option to offer both sides for special orders																
Warranty	KLA's single-source warranty covers the glazing and framing system for up to 10 years	Not Available - 3rd party warranty for glazing																
Evaluation Report for Code Compliance	ICC Evaluation Report available	Non-Compliant No published ICC Evaluation Report available																