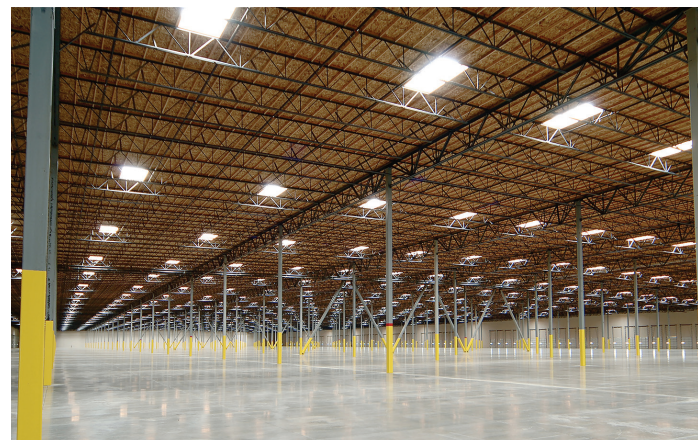




Toplighting Systems

Translucent Skylights and Roof Assemblies, Solatube® Tubular Daylighting Devices, Unit Skylights + Smoke Vents, Metal Framed Skylights





Contents

Company Overview	3
-------------------------	----------

Architectural Solutions Team	4
-------------------------------------	----------

Product Overview	5
-------------------------	----------

Toplighting Systems	6-11
Translucent Roof Assemblies	6-7
Tubular Daylighting Devices	8
Metal Framed Skylights	9
Unit Skylights	10
Smoke Vents	11

Specialty Options	12-13
--------------------------	--------------

Planet Passionate	14-15
--------------------------	--------------

Quality Comes to Light

Who We Are

Kingspan Light + Air (KLA) is an award-winning innovator of daylighting solutions for high-performance building envelopes.

We are a pioneer and leader in the daylighting industry, and continually innovate so clients never have to choose between efficiency, style, and safety. We're also focused on sustainability, both in the design and construction of our own systems and through Kingspan's Planet Passionate initiatives.

Our global team of highly-skilled and experienced professionals and extensive manufacturing capability allow us to provide daylighting systems that meet your need and budget. Together, we leverage our knowledge and expertise to serve as daylighting consultants for the architectural community and building industry.

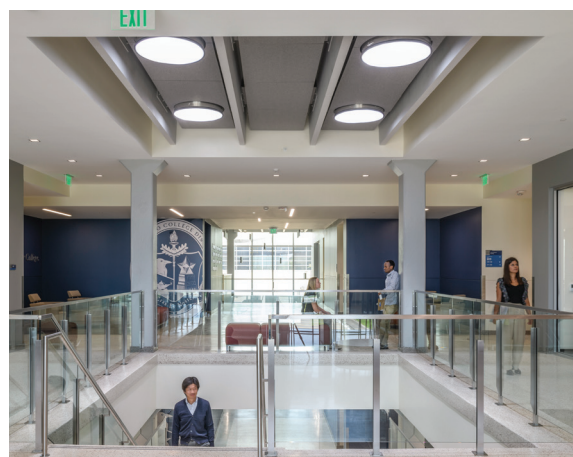
Never Compromise. Always Innovate.

The KLA Advantage

You shouldn't have to compromise your design. We want to enable architects to achieve high levels of building performance without sacrificing aesthetics.

This is why we team up with architects, contractors, and building owners to develop highly versatile daylighting systems. We will work with you from design concept through engineering and installation - and beyond - to ensure performance and quality.

Our expansive lineup of daylighting and natural ventilation solutions provide you with a wide range of system choices that allow us to find the right fit for your project's specific needs. Contact us today to find out how to make your daylighting design dreams a reality.



Start Planning Your Next Project

Kingspan Light + Air is the global leader in daylighting, ventilation, and smoke management solutions for a sustainable built environment. Our translucent wall systems, skylights, Solatube® tubular daylighting devices, canopies, walkways, and smoke vents are engineered to optimize the role that natural light and air play in the design of advanced energy-efficient buildings and the health and well-being of their occupants.



Quality Solutions

Now that Kingspan Light & Air, Solatube International and Major Industries, Inc. have joined forces, we offer a full range of standard and custom daylighting solutions built to perform across a wide array of conditions and set a higher standard for the quality and versatility of daylighting technology and integrated design solutions.



Connecting with our Customers

Our ultimate goal is to connect with our customers and serve them on a more personal level. From a dedicated design team to new features on our website that allow for more direct requests for assistance, we want to partner with you from initial design to installation and beyond.



Our Mission

Our newly-formed Architectural Solutions Team serves our clients as their comprehensive project partner. Our team collaborates with you to create exceptional outcomes through the seamless integration of architectural daylighting design assistance, product education and inspiration, and more.



Services Available

- Design Assistance
- Testing and code information
- Technical details
- System performance analysis
- Daylight modeling
- Preliminary structural review

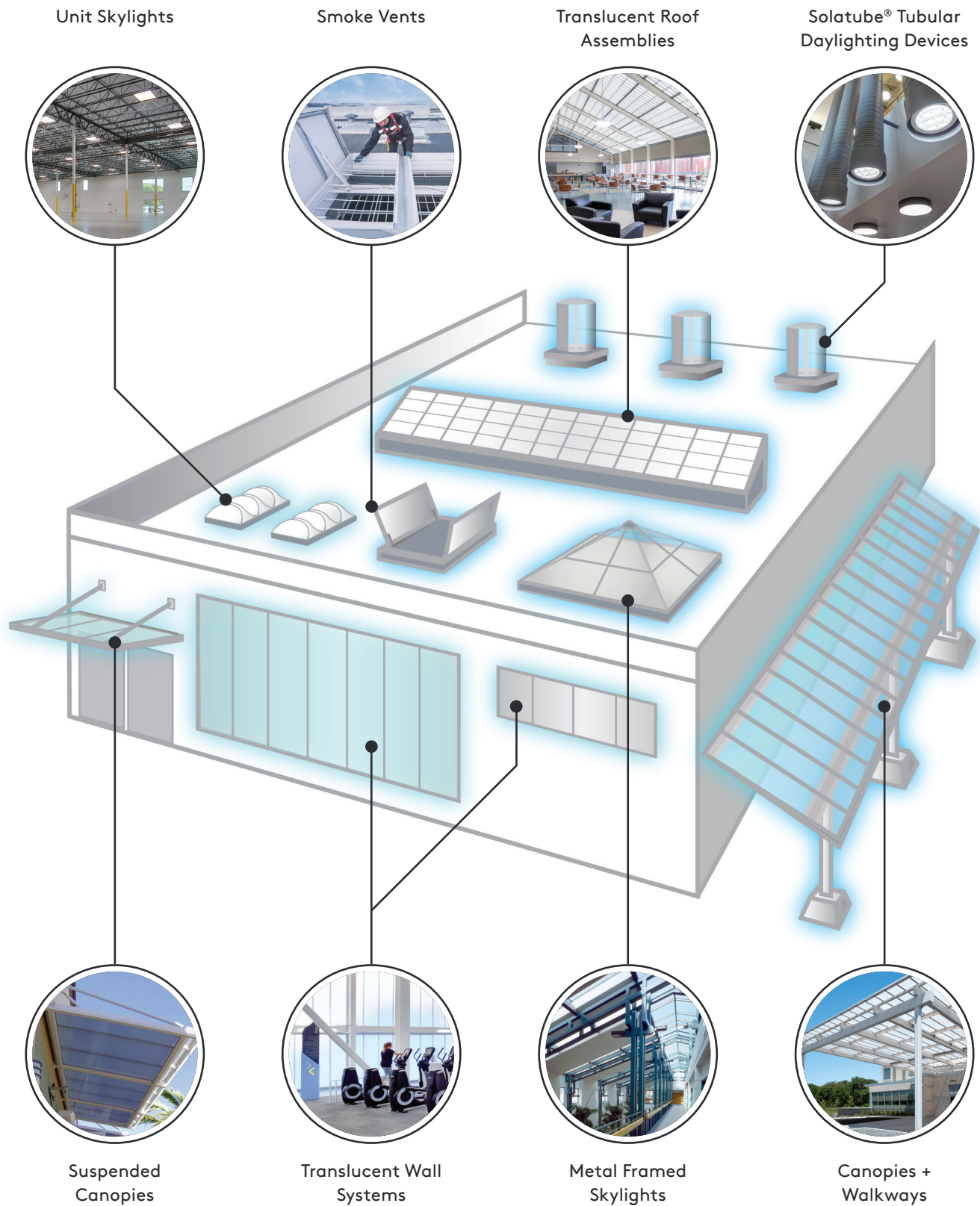


Project Assistance

We are here to help! Your Project Designer is a daylighting industry expert who:

- Assists with product selection and system design
- Helps identify exact daylighting needs for your project
- Models alternate design solutions when needed
- Provides daylighting inspiration packages with images
- Designs solutions with your exact budget and performance goals in mind
- Provides budgetary pricing during conceptual design and design development

Kingspan Light + Air Family of Products



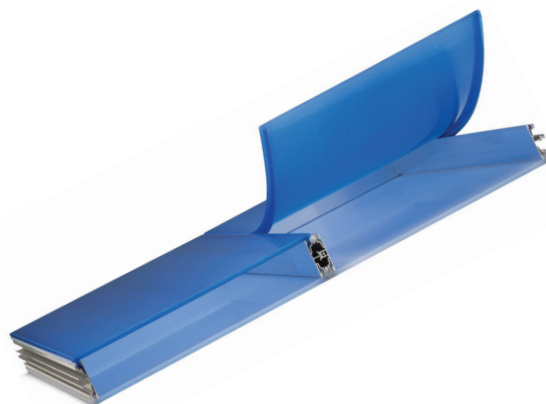
Translucent Roof Assemblies

QuadSpan™ Polycarbonate Multiwall Systems

QuadSpan™ (formerly Quadwall®) two panel translucent skylights diffuse sunlight, provide excellent thermal performance, and are significantly lighter than traditional glass systems. Glazing panels are pre-assembled for easy installation and are designed to span long distances, allowing for a clean look with less visible exterior framing. QuadSpan™, available in a variety of specialty configurations and custom designed to fit your project's needs, is an excellent choice for both new construction and renovation.

QuadSpan™ skylights are available in a variety of standard shapes, including vaults, ridges, single-slopes, pyramids, and more. Vibrant glazing colors are also available, making it easy to incorporate school or logo colors into your design.

QuadSpan™ skylights are an impactful design element that can make a space more inviting, and create an open and comfortable environment for occupants.



Versatility +

QuadSpan™ systems feature Removable System Technology (RST) that allows for glazing panels to be removed independently from one another, making repairs and retrofits possible without opening interior spaces to the elements.

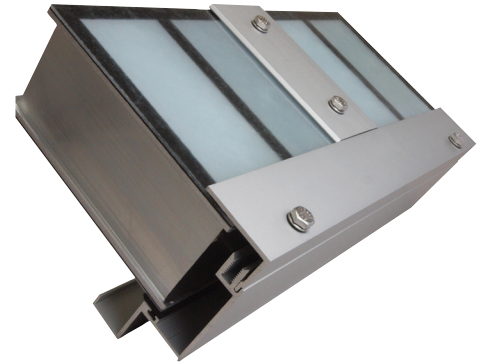


Translucent Roof Assemblies

GridSpan™ Fiberglass Reinforced Polymer Systems

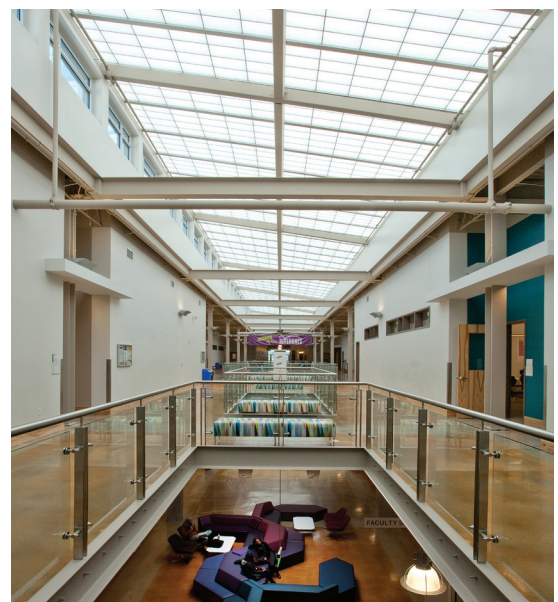
GridSpan™ skylights (formerly Guardian 275®) provide built-in sun control, eliminating many of the issues common with traditional glass systems. Their aluminum framing and sandwich panel construction also make them strong but lightweight, often reducing the need for additional support structure.

GridSpan™ systems feature advanced Ultimate Series™ face sheet technology for long-term dependability, and can be configured with thermal breaks as well as numerous insulation options for enhanced performance in more demanding climates. GridSpan™ panels are also available with a variety of sheet color options, and panel insulation can also be tinted to create a stained-glass look or to incorporate school or logo colors. Smaller sized single slope and pyramid skylights can also be partially assembled prior to shipping, allowing for faster installation.



Performance Focused

GridSpan™ skylights feature built-in moisture management, including integral gutters on framing members, which allows any built-up condensation to escape to the exterior of the building.



Tubular Daylighting Devices



SkyVault, SolaMaster, and Brighten Up Systems

Solatube tubular daylighting devices deliver optimal light levels to hard-to-reach areas that traditional windows or skylights cannot reach. They harvest natural light using patented rooftop domes, then transfer the light to interiors through highly reflective tubing with minimal light loss and perfect color rendition. At the ceiling level, specially designed lenses evenly disperse the daylight throughout the space for energy-efficient light that is cost-effective and sustainable.

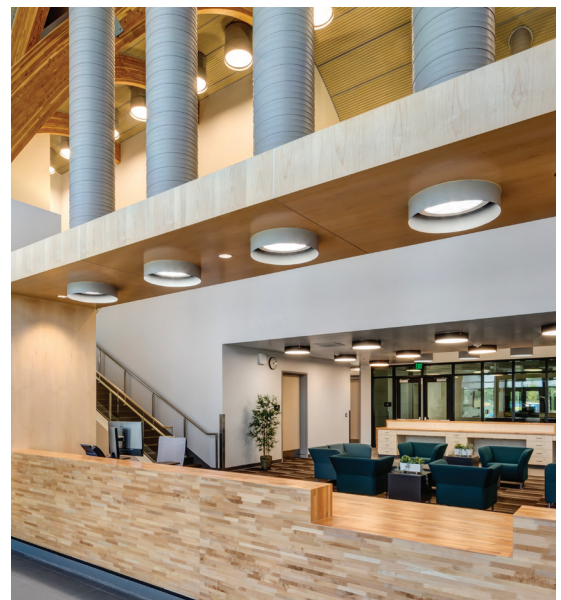
Great for retrofit and new construction, Solatube daylighting systems are modular and easy to integrate in ceiling systems. Unlike traditional skylights, they are designed to be reconfigurable over time, and to reduce glare and inconsistent light patterns while screening UV and infrared wavelengths that can fade finishes and overheat interiors.

Solatube's commercial daylighting systems include SkyVault for large spaces, SolaMaster for medium sized spaces and Brighten Up for smaller areas.



Advanced Technology

Raybender® optical technology and proprietary Spectralight® Infinity tubing allow for optimal light delivery throughout the day.

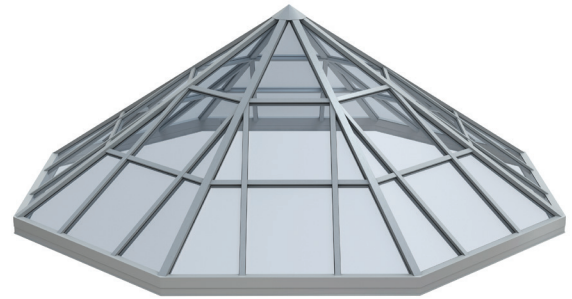


Metal Framed Skylights

KlearSky™ Glass Systems

KlearSky™ metal framed glass skylights are a great way to add daylight and drama to a space. Glass skylights can flood a space with light, and add an aesthetic focal point to entryways, atriums and other well-travelled spaces. And with a wide variety of options available, including custom shapes and finish colors, plus a wide range of compatible glass options, KlearSky™ systems can be configured to meet just about any daylighting challenge you might face.

Our KlearSky™ skylights are also available with both standard and custom paint options and anodized finishes. All components are shipped fabricated and ready to assemble for superior quality control and a simplified installation.



Visual Impact

KlearSky™ metal framed glass skylights are a great way to add eye-catching drama to a space. Expansive views of the sky can help define atriums and entryways, and allow maximum sunlight into a space.

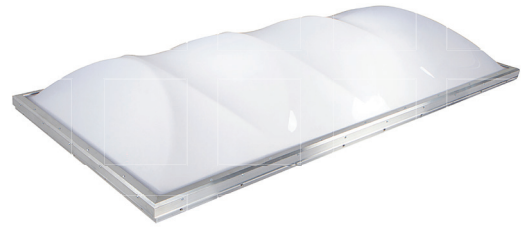


Unit Skylights

We offer dependable and cost-effective unit skylight solutions to fit nearly any project need. They arrive pre-assembled and ready to install, reducing time on-site, and are an excellent option for both new builds and retrofit projects. They're available in a wide range of sizes and models with options that include acrylic and polycarbonate dome configurations, thermally broken framing, color and prismatic glazing options and more.

Specialty options are also available, including:

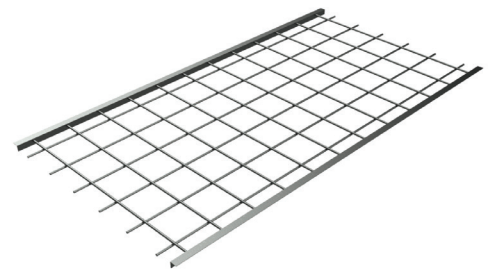
- FM approved systems available
- High security and heavy weather options
- High velocity hurricane zone systems
- Internal safety screens and external safety cages also available - contact us for additional detail



Roof Safety

Kingspan Light + Air offers a wide range of roof safety solutions, including mobile safety rails and safety lines that can be installed without penetrating the roof's surface, ladder guards, and hatch guards.

Skylight-specific cages and screens are also available, and are designed to fit with our unit skylight offerings. Contact us to find out more about our full line of roof safety products, and share your specific project requirements.

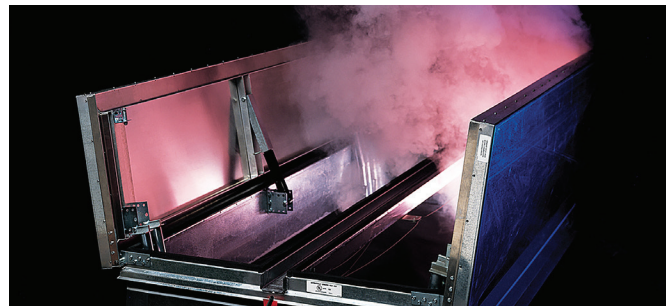
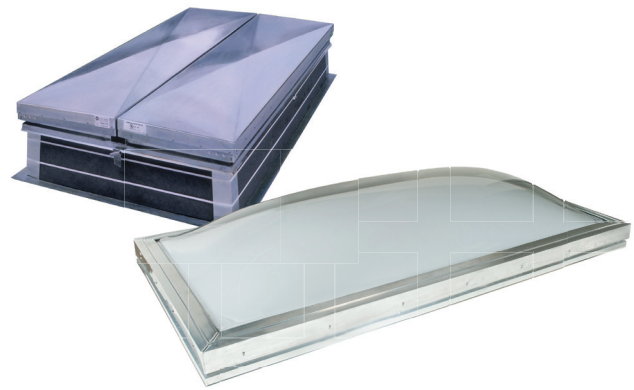


Smoke Vents + Natural Ventilation

Smoke and heat vents bring beneficial natural light into interior spaces, but also provide a path for hot gasses and smoke to exit a building during a fire. Designed to perform under severe conditions, they can help minimize structural damage, reduce lateral fire spread, allow fire-fighters to determine the location of a fire by observing smoke plumes from open vents, and can reduce dangerous heat and vision-obscuring and potentially toxic smoke.

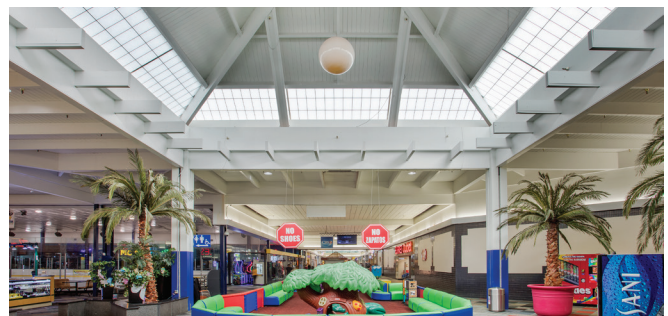
Features and options include:

- Polycarbonate and Acrylic domes for efficient light capture (metal lid option also available)
- Durable aluminum or galvanized steel construction
- UL Listed and FM Approved models available
- Curb mounted - insulated frame optional (self-flashing bases also available)
- Available in widths up to 60" and lengths up to 96"



Retrofit Solutions

Whether you're simply updating an old and outdated daylighting system or upgrading after storm damage or other failure, we can help. We offer a wide range of skylight, wall system and canopy options designed to make retrofits easy - from retrofit-ready panels to Direct-2-Fab systems that can be on-site quickly. We'll work with you to find the right solution for your replacement needs.



Specialty Configurations

Designed to Perform in a Variety of Environments



Blast Protection + Explosion Release

Kingspan Light + Air offers a wide range of blast rated solutions - from polycarbonate wall and skylight systems to fiberglass panel wall and skylights systems. These systems can also be configured for explosion release.

Contact us for additional details on blast protection systems and requirements for your project.



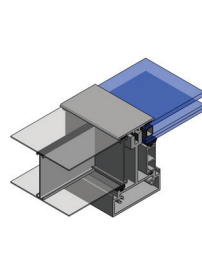
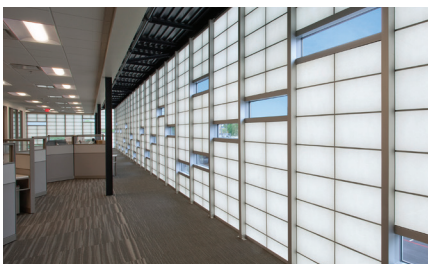
Hurricane + Heavy Weather

Solatube SolaMaster 750 DS series is the only rooftop daylighting device in the world compliant for use in an ICC 500 storm shelter and FEMA P-361 safe room. We also offer unit skylights, translucent walls and custom skylights that meet Texas Department of Insurance and Florida Product Approval standards, and will work with you to find the right system for your project needs.



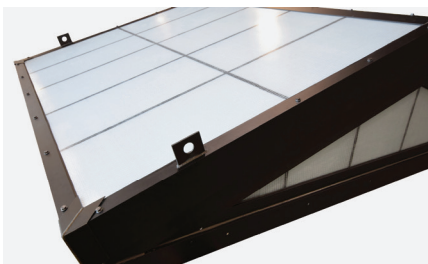
Sound Transmission Class (STC)

Custom translucent wall and skylights systems can be configured for improved control of sound. Whether you're looking to reduce highway noise or occupant noise between workspaces, we'll work with you to find the right solution for your project.



Mixed Glazed Systems

Combining translucent and glass glazing is a great way to gain sun control while still allowing views to the outside. GridSpan™ (formerly Guardian 275®) systems can also be configured as a unitized system, combining translucent panels with fixed glass, operable windows and/or louvers that arrives on-site pre-assembled and ready-to-install.



Removable Systems

Kingspan Light + Air offers a variety of translucent daylighting systems that can be configured with lifting tabs that allow for larger skylights to be removed for access to heavy equipment, or lifted into place in the case of hard-to-access building sites.

Custom Colors, Accessories + Graphics

Make a Statement

Backlighting

Translucent daylighting systems can create a beacon-like look during evening hours with normal interior lights - but add some properly placed LED backlighting and the space can transform. Not sure where to start? We can assist you through the design process and connect you with the right lighting designers to make your project glow.



Glazing + Insulation Color

Polycarbonate glazing is available in a variety of standard and custom colors, and can be a vibrant way to include school and logo colors in a facility. FRP panel systems come in more muted colors, but insulation can be colored to give the panels a stained glass type look. Contact us to find out more about color options and availability.



Custom Decorative Options

Solutube systems are offered with a variety of standard diffusers to help the system blend into interior environments, but when you want to stand out, we'll work with you to find and source the right custom shade or tube aesthetic that can make the system a focal point in the space.



Applied Graphics

Whether it's a company logo, a school mascot or a graphic that helps define a building's use, we'll work with you to define your needs and determine the best graphic solution. Simple or complex, graphics can be a great way to evoke a building's past, reinforce a brand, or simply add some fun and aesthetic impact.



Custom Grid Patterns

GridSpan™ (formerly Guardian 275®) translucent panel roof assemblies can be designed with custom grid patterns that stray away from the standard rectangular grid. Whether you're emulating stained glass or want to mimic the unique architectural lines in other parts of your space, we can help create a daylighting system that fits your needs.



Focus On The Environment



What is Planet Passionate?

At Kingspan, we want to play our part. We believe advanced materials, building systems and digital technologies hold the key to addressing these issues. Working in partnership with the industry, and through our new IKON innovation centre in Ireland and our Planet Passionate global sustainability program, we are confident that together we can:

1. Move to a clean energy future
2. Manage the earth's resources more sustainably
3. Protect our natural environment

Planet Passionate is Kingspan's ambitious 10-year global sustainability program which aims to impact three big global issues:

- Climate change
- Circularity
- Protection of our natural world

By setting ourselves challenging targets in the areas of energy, carbon, circularity and water, we aim to make significant advances in the sustainability of both our business operations and our products.



Our Targets

ENERGY



Target

60%

Direct renewable energy use by 2030

Target

100%

Install Solar PV systems on all wholly owned facilities by 2030

Target

20%

On-site renewable energy generated by 2030

CARBON



Target

0%

Net-zero carbon manufacturing by 2030

Target

50%

Reduction in product CO₂e intensity from our primary supply partners by 2030

Target

100%

Zero emission company funded cars by 2025

CIRCULARITY



Target

0

Zero company waste to landfill by 2030

Target

1billion

1 billion PET bottles recycled into our manufacturing processes by 2025

Target

100%

Quadcore™ products utilizing recycled PET by 2025

WATER



Target

100million

Harvest 100 million liters of rainwater by 2030

Target

5

Support 5 ocean clean-up projects by 2025

Kingspan Light + Air

North American Headquarters

28662 N. Ballard Dr.

Lake Forest, IL 60045

Toll Free: +1 800 759 6985

T: +1 847 816 1060

F: +1 847 816 0425

E: info@kingspanlightandair.us

www.kingspanlightandair.us

For more information on Tubular Daylighting
Devices, visit: www.solatube.com



To ensure you are viewing the most recent and accurate
product information, please scan the QR code above

Care has been taken to ensure that the contents of this
publication are accurate, but Kingspan Limited and its
subsidiary companies do not accept responsibility for errors
or for information that is found to be misleading. Suggestions
for, or description of, the end use or application of products
or methods of working are for information only and Kingspan
Limited and its subsidiaries accept no liability in respect
thereof.

For the product offering in other markets please contact your
local sales representative or visit kingspan.com

© Kingspan and the Lion Device are Registered Trademarks of
the Kingspan Group plc in the US, Canada and other countries.

© Kingspan Light + Air

MKT-PCB-0001-2403

