



BriteWay™

Canopies + Walkways


Kingspan.

 **CPI** Daylighting
Building Envelope Solutions

Custom Canopies

Customized solutions that bring your vision to life.

Kingspan Light + Air | CPI Daylighting can provide everything from a simple glazing skin system to the design and fabrication of a full structural system, depending on the canopy's configuration and design loads. Your custom canopy might be a simple entrance overhang or perhaps a monumental structure with complex connections. We have experience with every scope of project.

Our Architectural Support team can partner with you and your team to help design the structure and determine the optimal solution for achieving your design goals and maintaining code compliance.



► CTA Cermak - McCormick Place

Chicago, IL id 37707
Ross Barney Architects

The main goal of the station design was to construct an eye-catching element that served as a visible landmark for this high-traffic transit stop. The canopy enclosure had two requirements: protect against wind and rain, and the platform had to remain clear of structural supports. The project required a durable, low maintenance system that also maximized the amount of natural light on the platform. Our custom translucent BriteWay™ canopy was selected to do just that, while also facilitating quick-and-easy installation and enabling the project to stay within budget.



Photo by Ben Wheeler



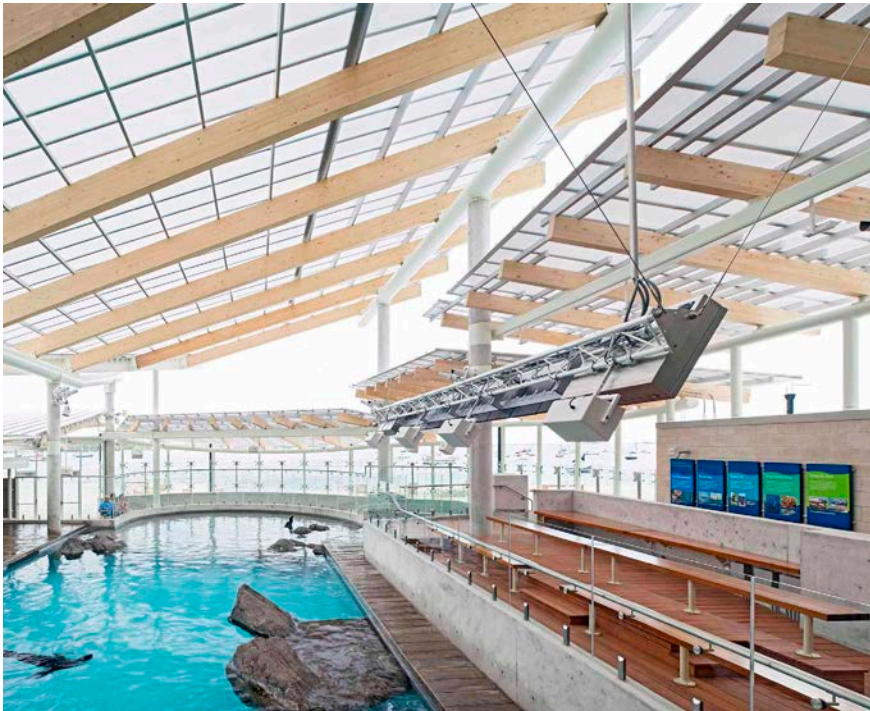
▲ University of N. Florida Student Center id 24863
Jacksonville, FL
Rink Design



Vibrant colors can help bring your canopy to life

The goal of the Monrovia Station Square development was to provide the community with a unique space that people could connect to and that would generate activity within the neighborhood. The bandshell canopy has become an iconic element in the park. The colorful glazing inserts give the canopy a more vibrant and playful appearance.

◀ Monrovia Station Square id 40160
Monrovia, CA
IBI Group



► **Norwalk Hospital** | Norwalk, CT
Freeman White id 32016

Collaboration and ingenuity played a crucial role in the successful design of the drive-up canopy at Norwalk Hospital (pictured right). Given the hospital's proximity to the ocean, the architect specified that the self-supported structure be made fully out of aluminum to prevent any rust and eliminate the need for periodic painting. Achieving this goal required some complex engineering to ensure that we could meet the large cantilever spans that the design required. We worked extensively with the architect and engineer to design the intricate structure and then fabricated the entire customized canopy system from the ground up.

▲ New England Aquarium id 24210 Boston, MA
McManus Architects

▼ Museum of Flight Bridge id 25284 Seattle, WA
SRG Partnership



photo by Lara Swimmer Photography



Imagination
Meets
Innovation



University of Pittsburgh Medical Center id 24359
Pittsburgh, PA
Burt Hill Kosar Rittlemann Architects

Single Source Solutions From The Ground Up



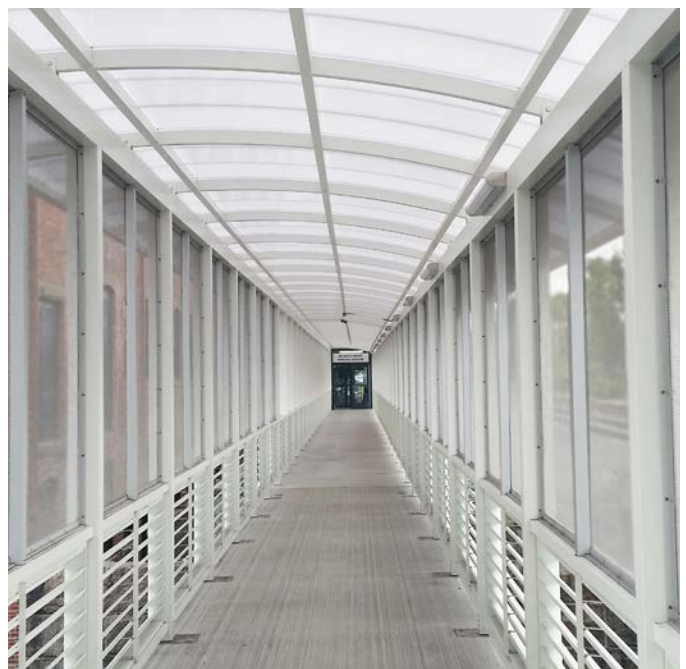


▲ **Tanger Outlet Mall** | Oxon Hill, MD
Adams + Associates Architecture id 36369

The open air outlet mall outside of Washington D.C. included more than 63,000 sq.-ft. of glazing for a series of overhead BriteWay™ ridge canopies that were designed to shelter shoppers. The goal was to allow for steady year-round retail traffic.

► **Beverly Depot Transit Station** | Beverly, MA
AECOM id 34362

The project required a high level of coordination and thoughtful scheduling, and Kingspan Light + Air | CPI Daylighting was able to provide a single-source solution to simplify the process. The custom BriteWay™ canopy features aluminum louver infill panels and custom stainless-steel wire mesh protective screening.



► **Mission Creek Maintenance** | San Francisco, CA
MK Think id 24532

Blue Pentaglas® glazing was used to clad one side of the Mission Creek Maintenance Facility and transition to a curved canopy above the entrance. The custom BriteWay™ canopy was designed to resemble a wave, creating a unique look that references the site's nautical context and pays homage to the historic wooden ships that used to sail Mission Bay.



1 BWI Airport / Baltimore, MD / URS Corporation / id 9682
2 Mississippi Memorial Stadium / Jackson, MS / CDFL Architects / id 15251



3 Osborne Rapid Transit Station / Winnipeg, MB / ft3 / id 30661
4 Barack Obama Learning Academy / Hazel Crest, IL / JMA Architects / id 37229



**Kingspan Light + Air
CPI Daylighting**

28662 N. Ballard Drive
Lake Forest, IL 60045 U.S.A.

800.759.6985 847.816.1060

Fax 847.816.0425



To learn more, visit:

cpidaylighting.com

Olympia Regional Learning Academy id 37100
Olympia, WA
TCF Architecture

© 2016 Kingspan Light + Air | CPI Daylighting All rights reserved.

Kingspan Light + Air | CPI Daylighting, Inc. reserves the right to change, discontinue or modify our products, specifications and designs at any time without notice and without incurring obligations. Printed in the U.S.A.